



Air Source Treatment Unit Tips

VPC always controls very strictly all the details, from mould-making to die-casting technique, from high precision machining to orderly assembling, from intelligent test control to quality control.

How to Use and Maintain

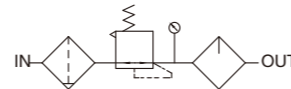
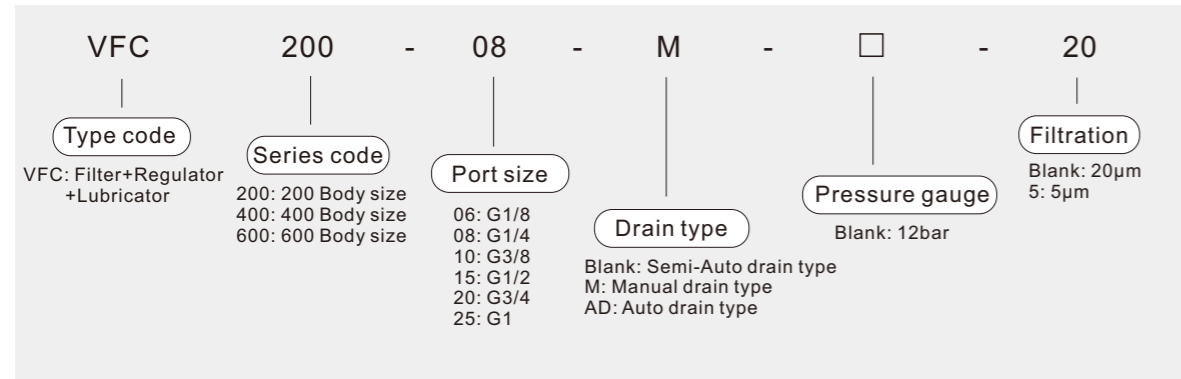
1. Before use, check the unit to see if there is some damage during the transportation, or if the joint connection is loose. If everything be ok, then start to use
2. When installing, please pay attention to the direction of airflow and keep the unit upright.
3. When the inlet and outlet are in reduced connection, the airflow rate will be reduced approx by 10%. If with higher rate of precision, the airflow rate will be reduced approx by 7%.
4. For units with bowl guards, make sure to fixed them before use.
5. When use the regulator or filter and regulator. Firstly, we need to adjust the hand wheel to the zero position. Fix the pressure gauge and plugs on the right positions and ensure they will not leakage.
(Positions of the pressure gauge and plug can be exchanged)
Then compressed air in and adjust the air to a proper pressure.
6. When using the lubricator, we need to adjust the oil valve needle to the zero position and add oil to the oil level line first. Then adjust to a proper position when compressed air in. Pay attention to the brand and grade of the lubricating oil.
Never use spindle oil and lubricating oil containing lower ketone or aromatic hydrocarbon.
7. When using metal tubes for connection, remember to remove the metal grains, dusts and oil stains in the tubes.
8. Please attention whether the working condition meet the technical details of the units.
(Such as the working pressure, working temperature)
9. Please change the filter element when filter's function not goes well.
10. When remove the units from the system,
Please pay attention to protect the nuits by the dust plug on the threads.

How to Order

1. Please let us know the item No, order number, specifications and quantity when placing an order.
2. For orders of filter, regulator and regulator+filter ets., please specify the filter precision and pressure range. Otherwise, we will provide the our normal standard products to you.
3. For special requirements, you can contact us by e-mail, fax and so on, We can discuss together and arrange specially.

V Series Air Treatment Units

Ordering Code VFC Series FRL Combination



Product Feature

- * The VFC consisted of VFR and VL, each unit can be ordered separately.
- * The VF with water separator cleans the compressed air of fluid oil, condensation, and dirt particles. For special applications, a 20µm filter element can be replaced a by 5µm filter element.
- * The VR maintains inputting constant operating pressure despite fluctuations in line pressure and the amount of air consumed.
- * The proportional lubricator adds a regulated quantity of oil to the filtered air. The oil mist content is proportional to the flow and oil can be added during operation. The oil drip rate is controlled by the adjustable bolt. Normally, 1 to 12drops/1000L of air is sufficient.

Note

- * Max pressure for V Series auto drain is 0.8Mpa.
- * Max pressure for the Low-pressure type is 0.4Mpa.
- * G, PT and NPT threads are available.

Specifications

Model	VFC200-06	VFC200-08	VFC400-08	VFC400-10	VFC400-15	VFC600-20	VFC600-25	
Working medium	Clean air (40µm Filtration)							
Port size	G1/8	G1/4	G1/4	G3/8	G1/2	G3/4	G1	
Filtration precision	20µm, 5µm							
Proof pressure	0.15~0.8Mpa/0.15~1.2Mpa							
Max. Working pressure	1.0Mpa/1.6Mpa							
Min. Working pressure	0.8Mpa/1.0Mpa							
Working temperature	5 to 60°C							
Drain bowl capacity	15cc		80cc		230cc			
Oil bowl capacity	30cc		160cc		380cc			
Recommend lubricant	ISO VG 32 or equivalent							
Constitute	Filter regulator unit	VFR200-06	VFR200-08	VFR400-08	VFR400-10	VFR400-15	VFR600-20	VFR600-25
	Lubricator unit	VL200-06	VL200-08	VL400-08	VL400-10	VL400-15	VL600-20	VL600-25

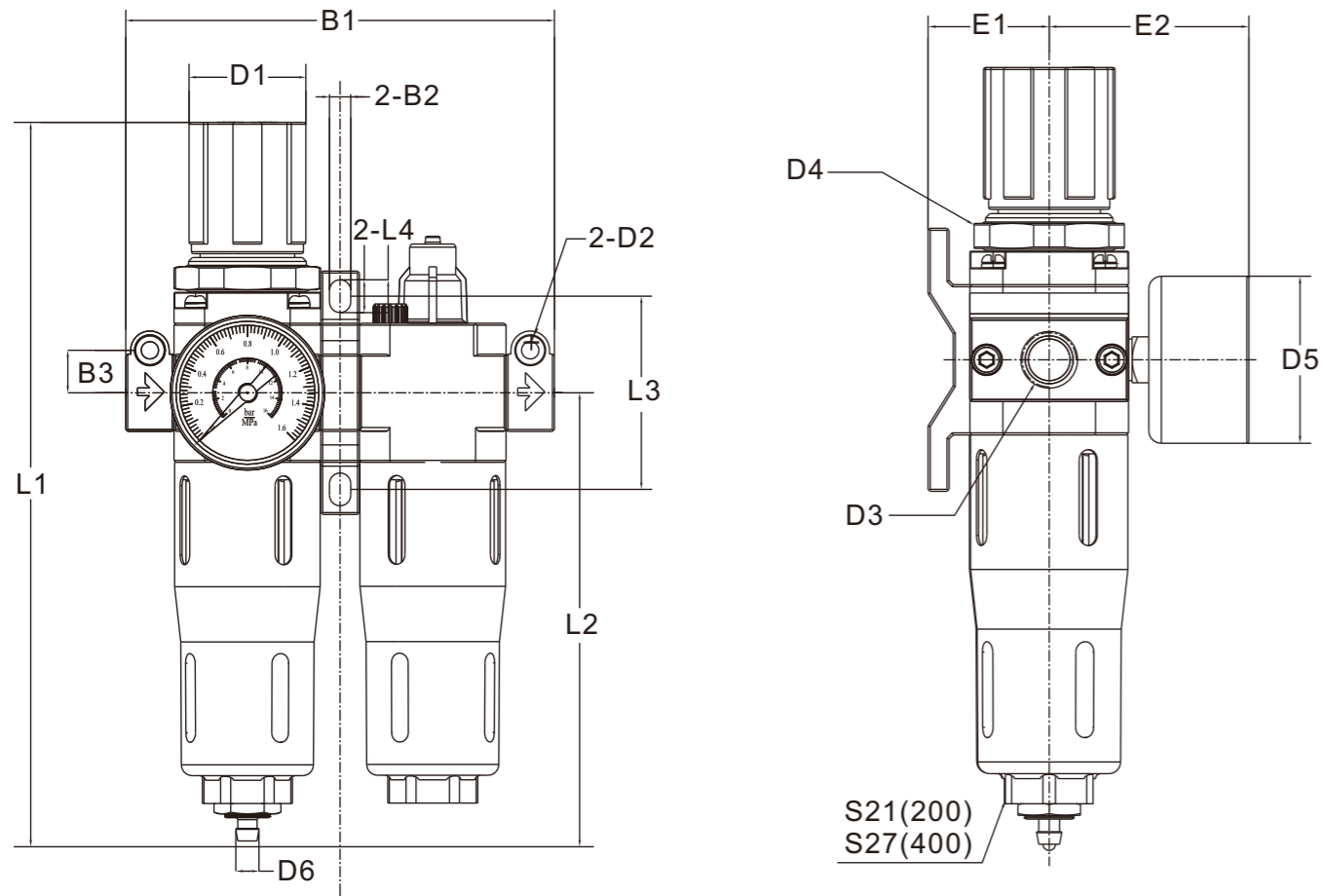
V Series Air Treatment Units

Exploded View



V Series Air Treatment Units

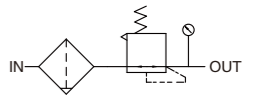
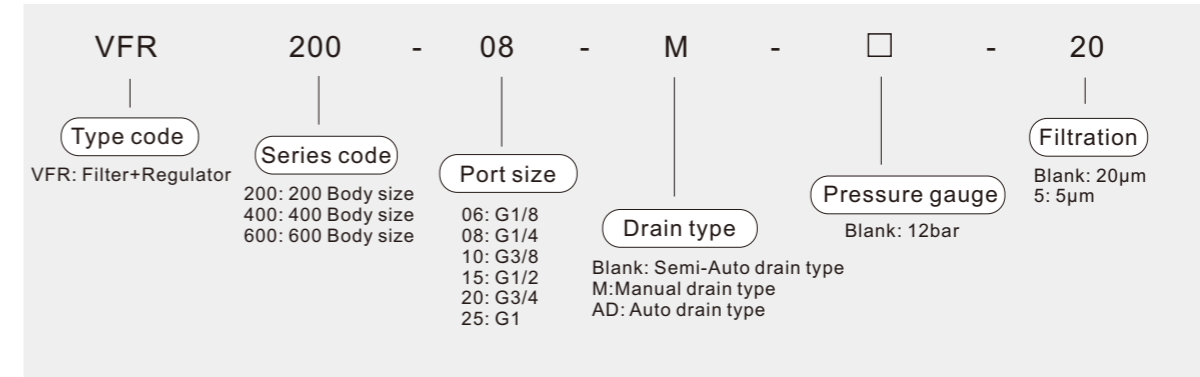
Main Dimensions



Model	B1	B2	B3	D1	D2	D3	D4	D5	D6	E1	E2	L1	L2	L3	L4
VFC200-06	111	5.5	11	Φ30	Φ4.5	G1/8	M42×1.5	Φ40	Φ6	29	48	187.5	117.5	50	9
VFC200-08	111	5.5	11	Φ30	Φ4.5	G1/4	M42×1.5	Φ40	Φ6	29	48	187.5	117.5	50	9
VFC400-08	146	6.5	16.5	Φ40	Φ5.5	G1/4	M32×1.5	Φ50	Φ6	39	55	240	150	70	10
VFC400-10	146	6.5	16.5	Φ40	Φ5.5	G3/8	M32×1.5	Φ50	Φ6	39	55	240	150	70	10
VFC400-15	146	6.5	16.5	Φ40	Φ5.5	G1/2	M32×1.5	Φ50	Φ6	39	55	240	150	70	10

V Series Air Treatment Units

Ordering Code VFR Series F.R Combination



Product Feature

- * Filter and pressure regulator combine a single unit, and cleans the compressed air of fluid oil, condensation and dirt particles. For special application, 20µm filter element can be replaced by a 5µm filter element.
- * The VR maintain inputting constant operating pressure despite fluctuation in line pressure and the amount of air consumed.

Note

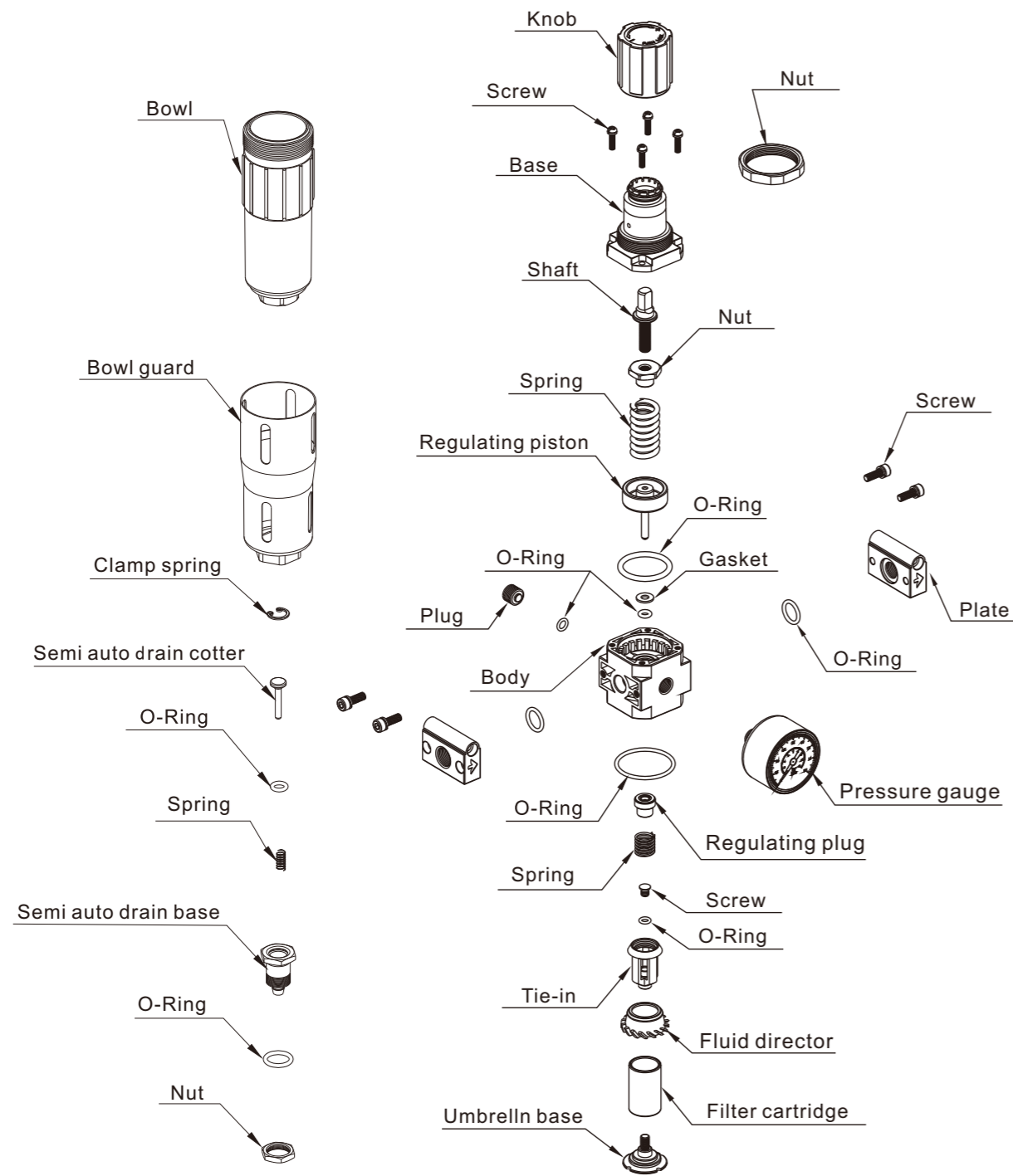
- * Max pressure for V Series auto drain is 0.8Mpa.
- * Max pressure for the Low-pressure type is 0.4Mpa.
- * G, PT and NPT threads are available.

Specifications

Model	VFR200-06	VFR200-08	VFR400-08	VFR400-10	VFR400-15	VFR600-20	VFR600-25	
Working medium	Clean air (40µm Filtration)							
Port size	G1/8	G1/4	G1/4	G3/8	G1/2	G3/4	G1	
Filtration precision	20µm, 5µm							
Proof pressure	0.15~0.8Mpa/0.15~1.2Mpa							
Max. Working pressure	1.0Mpa/1.6Mpa							
Min. Working pressure	0.8Mpa/1.0Mpa							
Working temperature	5 to 60°C							
Drain bowl capacity	15cc		80cc			230cc		
Constitute	Regulator Unit	VR200-06	VR200-08	VR400-08	VR400-10	VR400-15	VR600-20	VR600-25
	Filter Unit	VF200-06	VF200-08	VF400-08	VF400-10	VF400-15	VF600-20	VF600-25

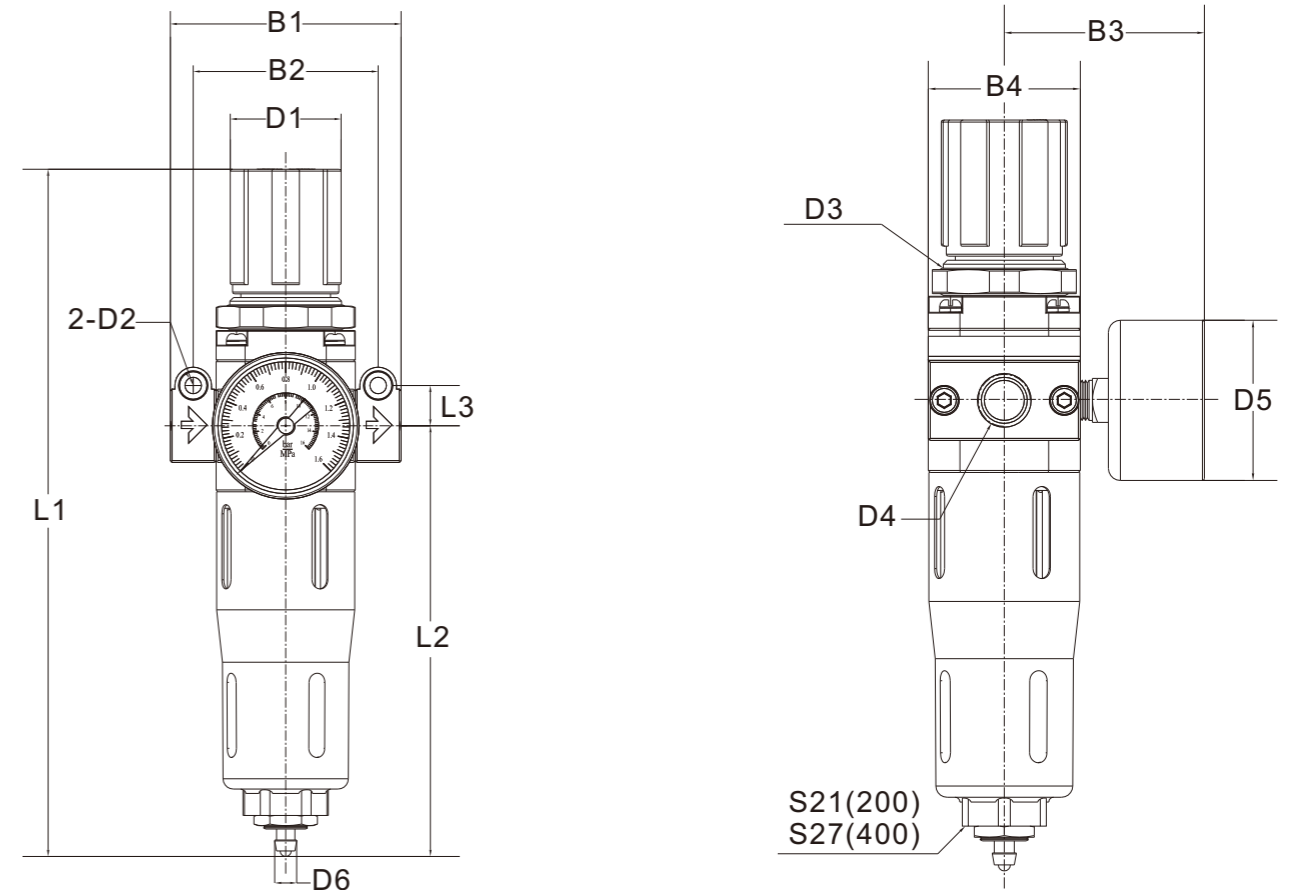
V Series Air Treatment Units

■ Exploded View



V Series Air Treatment Units

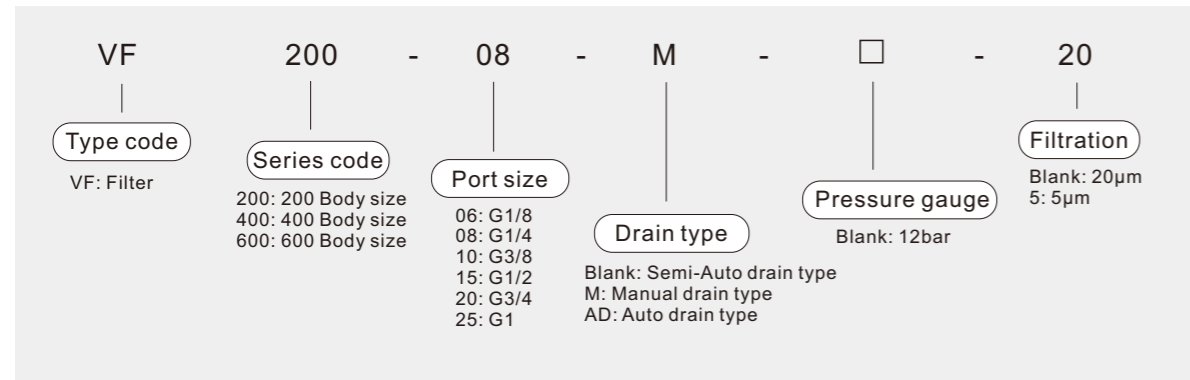
■ Main Dimensions



Model	B1	B2	B3	B4	D1	D2	D3	D4	D5	D6	L1	L2	L3
VFR200-06	63	50.5	48	38	Φ30	Φ4.5	M32×1.5	G1/8	Φ40	Φ6	187.5	117.5	11
VFR200-08	63	50.5	48	38	Φ30	Φ4.5	M32×1.5	G1/4	Φ40	Φ6	187.5	117.5	11
VFR400-08	82	67	55	52	Φ40	Φ5.5	M42×1.5	G1/4	Φ50	Φ6	240	150	16.5
VFR400-10	82	67	55	52	Φ40	Φ5.5	M42×1.5	G3/8	Φ50	Φ6	240	150	16.5
VFR400-15	82	67	55	52	Φ40	Φ5.5	M42×1.5	G1/2	Φ50	Φ6	240	150	16.5

V Series Air Treatment Units

Ordering Code VF Series Filter



Product Feature

* The VF with water separator cleans the compressed air of liquid oil, condensation, and dirt particles, for special applications, a 20µm filter element can be replaced by a 5µm filter element.

Note

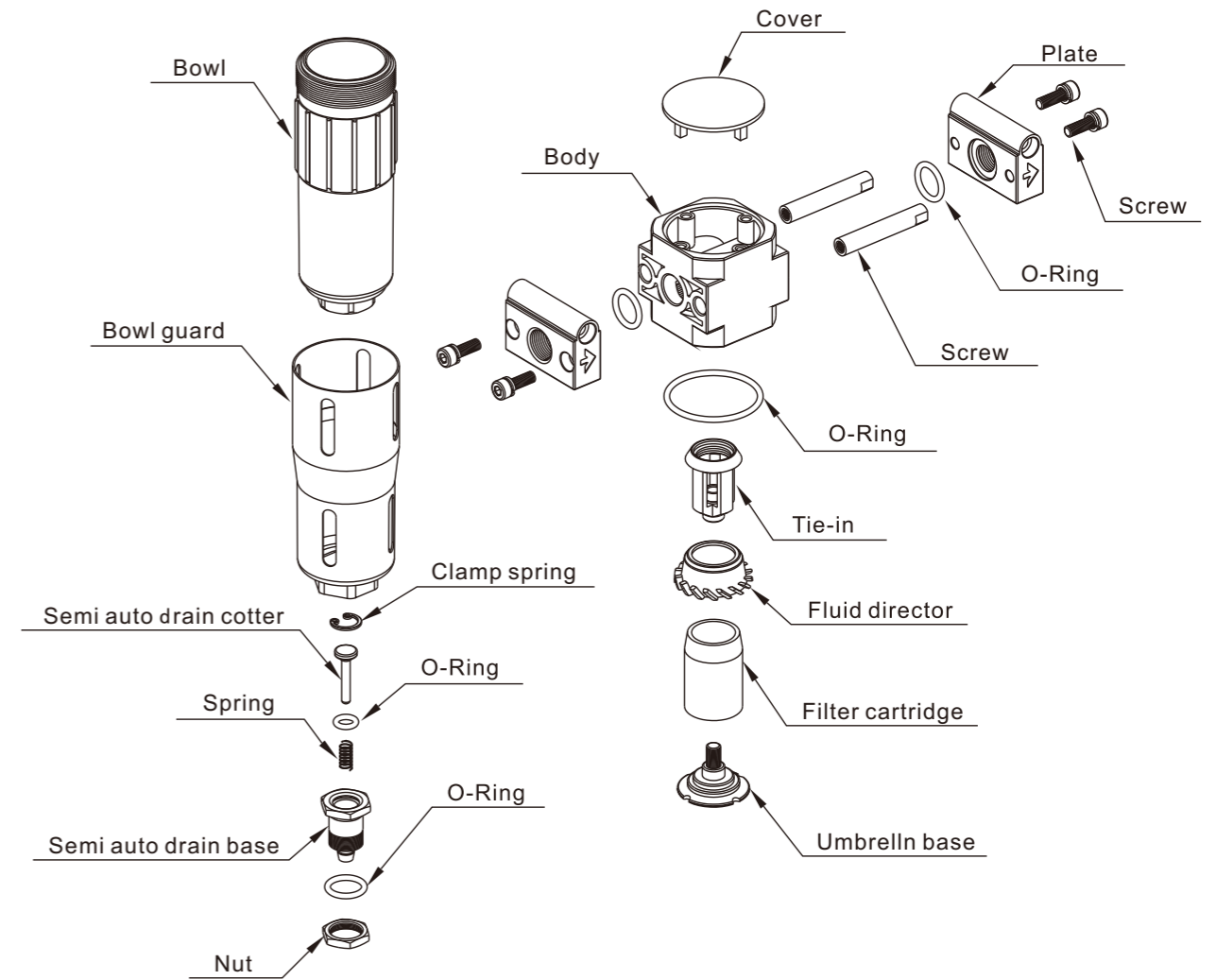
- * Max pressure for V Series auto drain is 0.8Mpa.
- * Max pressure for the Low-pressure type is 0.4Mpa.
- * G, PT and NPT threads are available.

Specifications

Model	VF200-06	VF200-08	VF400-08	VF400-10	VF400-15	VF600-20	VF600-25
Working medium	Clean air (40µm Filtration)						
Port size	G1/8	G1/4	G1/4	G3/8	G1/2	G3/4	G1
Filtration precision	20µm, 5µm						
Pressure range	0~1.0Mpa/0~1.6Mpa						
Max. Working pressure	1.0Mpa/1.6Mpa						
Working temperature	5 to 60°C						
Drain bowl capacity	15cc		80cc			230cc	

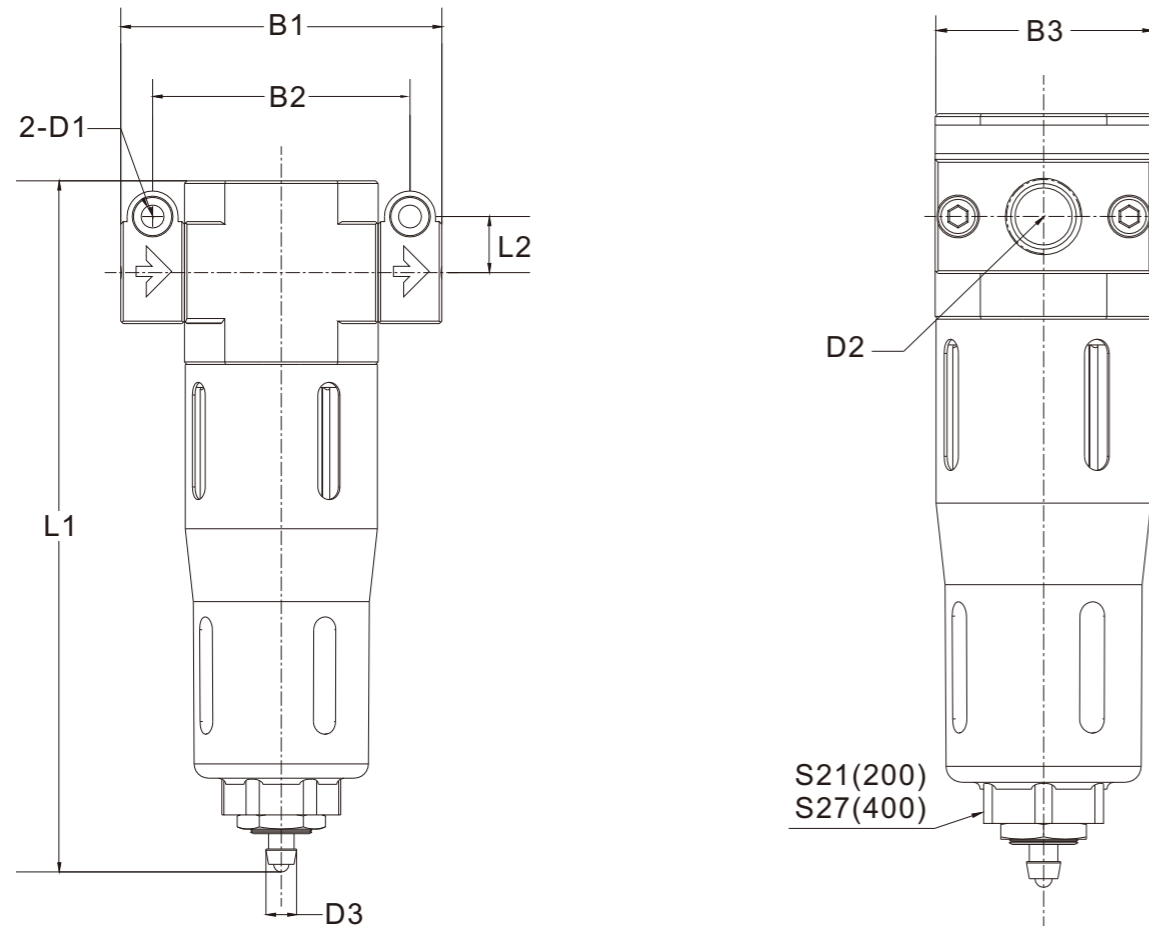
V Series Air Treatment Units

Exploded View



V Series Air Treatment Units

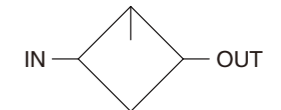
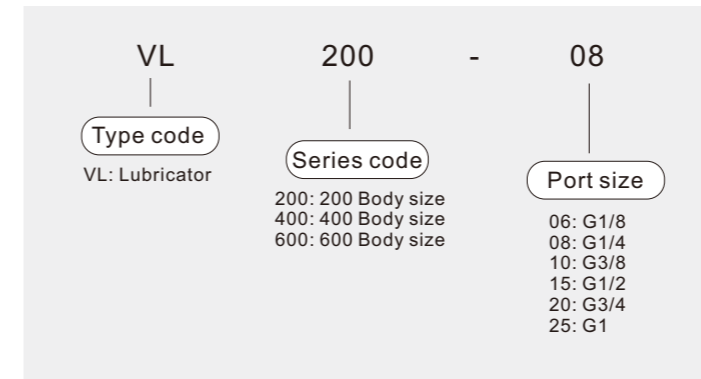
Main Dimensions



Model	B1	B2	B3	D1	D2	D3	L1	L2
VF200-06	63	50.5	38	Φ4.5	G1/8	Φ6	142.5	11
VF200-08	63	50.5	38	Φ4.5	G1/4	Φ6	142.5	11
VF400-08	82	67	52	Φ5.5	G1/4	Φ6	182	16.5
VF400-10	82	67	52	Φ5.5	G3/8	Φ6	182	16.5
VF400-15	82	67	52	Φ5.5	G1/2	Φ6	182	16.5

V Series Air Treatment Units

Ordering Code VL Series Lubricator



Product Feature

- * The direct constant-density lubricator adds a regulated quantity of oil to the compressed air. A valve maintains oil mist content proportional to the compressed oil flow.
- * The pressure drop occurs when the airflow through a sight feed oil cup delivers oil from the bowl to the sight oil indicator. The drop of the oil flows into the air channel when it is atomized.
- * The oil drip rate is controlled using the regulating screw. Normally, 1 to 12 drops/1000L of air is sufficient.

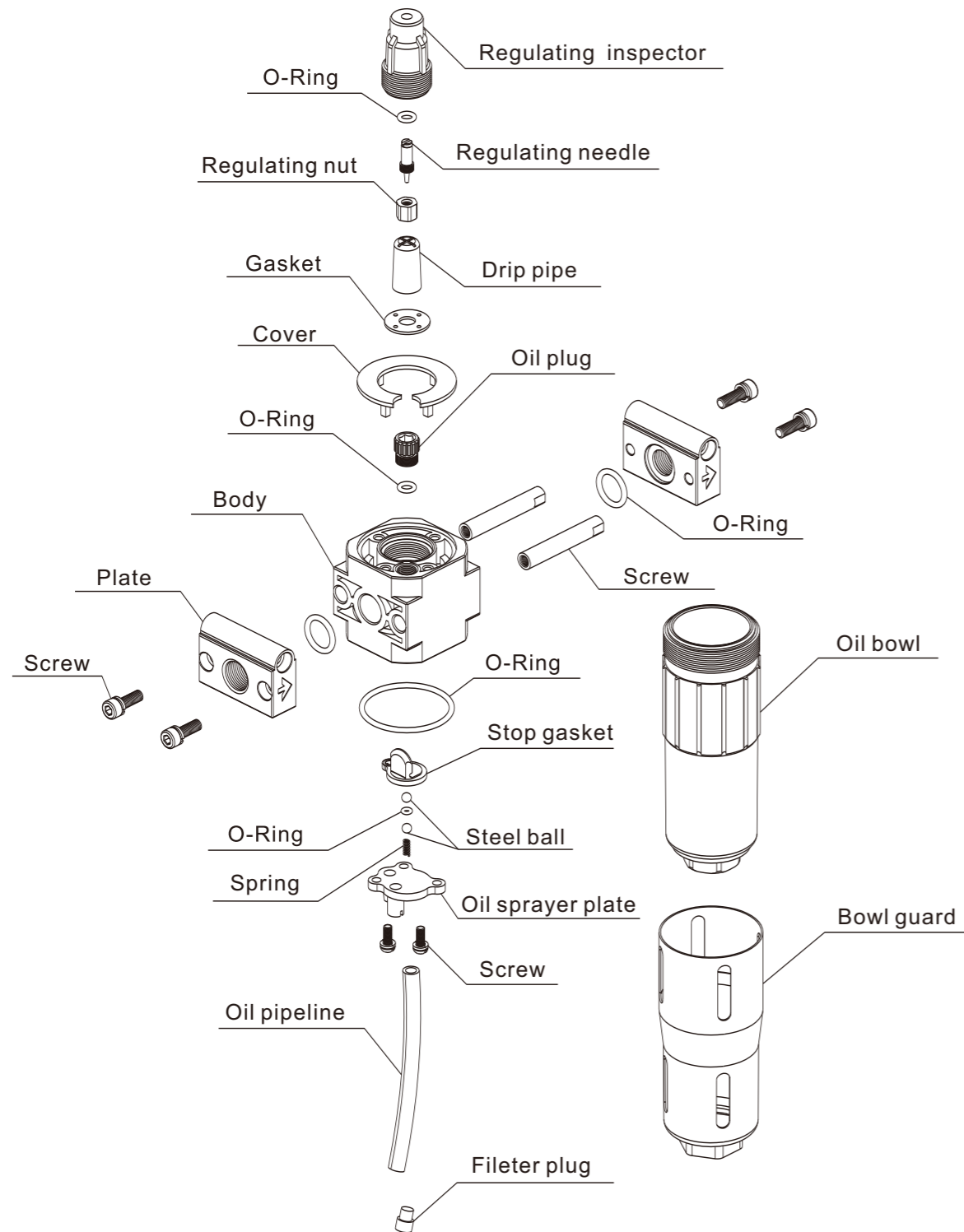
Note
* G, PT and NPT threads are available.

Specifications

Model	VL200-06	VL200-08	VL400-08	VL400-10	VL400-15	VL600-20	VL600-25
Working medium	Clean air (40µm Filtration)						
Port size	G1/8	G1/4	G1/4	G3/8	G1/2	G3/4	G1
Pressure range	0.15~0.8Mpa/0.15~1.2Mpa						
Max. Working pressure	1.0Mpa/1.6Mpa						
Working temperature	5 to 60°C						
Recommend lubricant	ISO VG 32 or equivalent						
Drain bowl capacity	15cc		80cc		230cc		

V Series Air Treatment Units

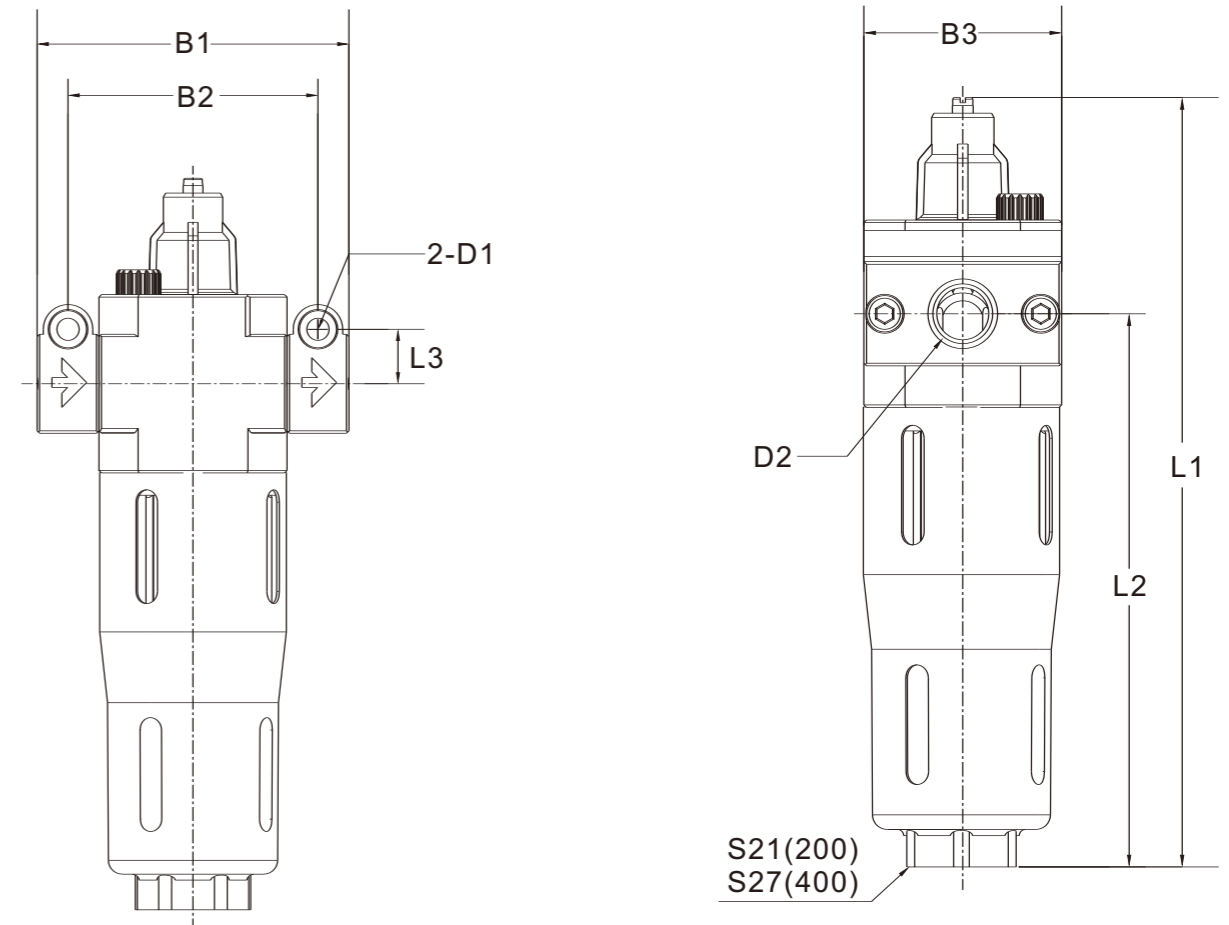
■ Exploded View



IV

V Series Air Treatment Units

■ Main Dimensions

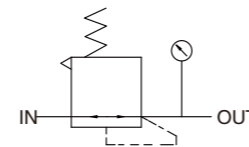
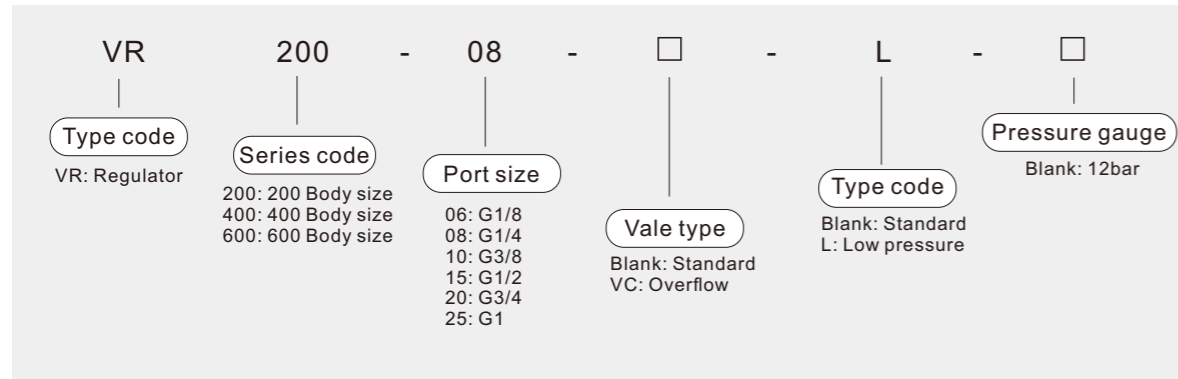


IV

Model	B1	B2	B3	D1	D2	L1	L2	L3
VL200-06	63	50.5	38	Φ4.5	G1/8	151-153mm	106	11
VL200-08	63	50.5	38	Φ4.5	G1/4	151-153mm	106	11
VL400-08	82	67	52	Φ5.5	G1/4	190.5-192.5mm	140	16.5
VL400-10	82	67	52	Φ5.5	G3/8	190.5-192.5mm	140	16.5
VL400-15	82	67	52	Φ5.5	G1/2	190.5-192.5mm	140	16.5

V Series Air Treatment Units

Ordering Code VR Series Regulator



Product Feature

* The VR maintains inputting constant operating pressure despite fluctuations in line pressure and the amount of air consumed.

Note

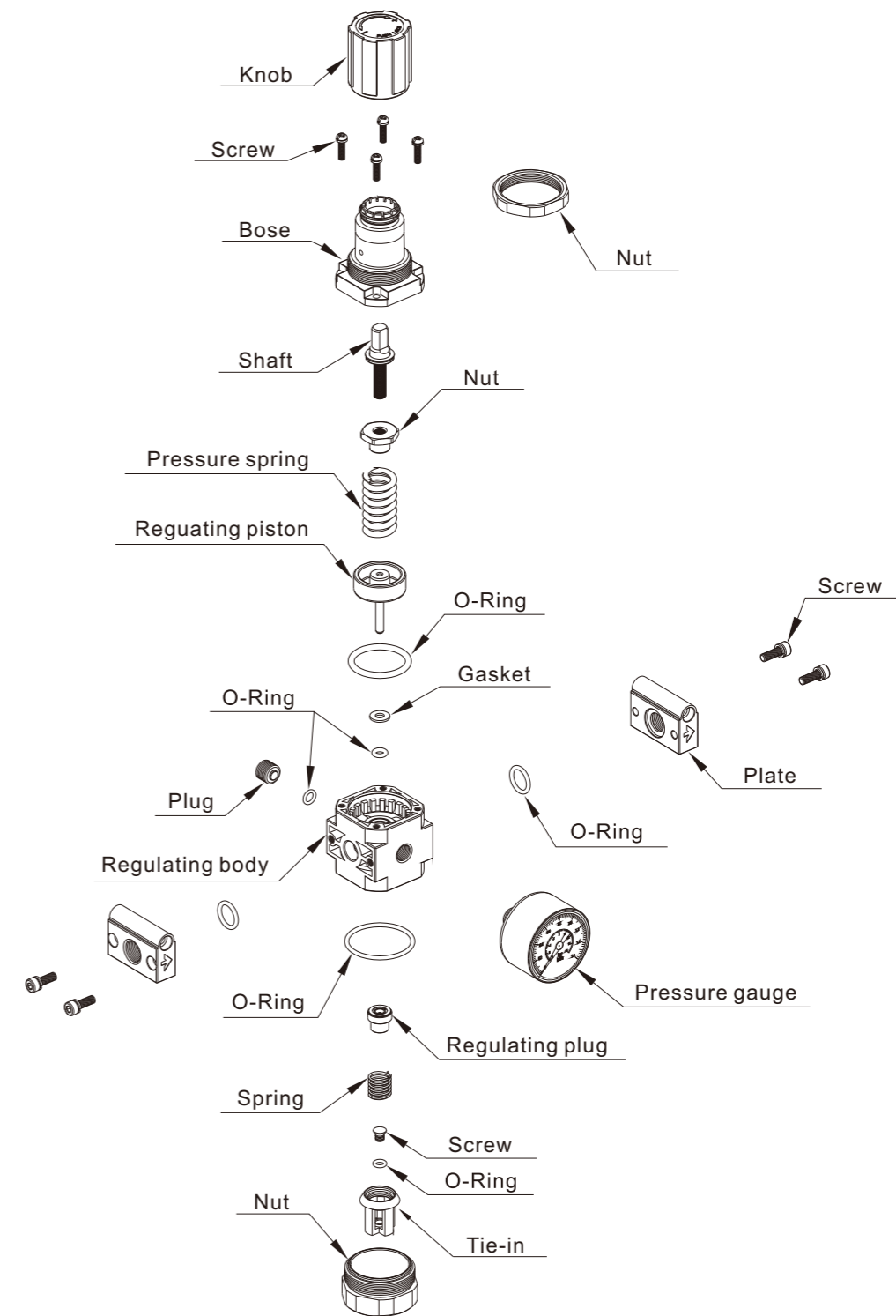
- * Max pressure for the Low-pressure type is 0.4Mpa.
- * G, PT and NPT threads are available.

Specifications

Model	VR200-06	VR200-08	VR400-08	VR400-10	VR400-15	VR600-20	VR600-25
Working medium	Clean air (40µm Filtration)						
Port size	G1/8	G1/4	G1/4	G3/8	G1/2	G3/4	G1
Pressure range	0.15~0.8Mpa/0.15~1.2Mpa						
Max. Working pressure	1.0Mpa/1.6Mpa						
Min. Working pressure	0.8Mpa/1.0Mpa						
Working temperature	5 to 60°C						

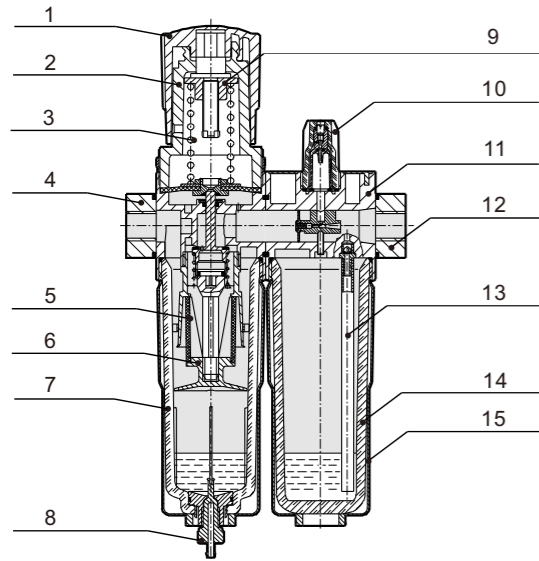
V Series Air Treatment Units

Exploded View



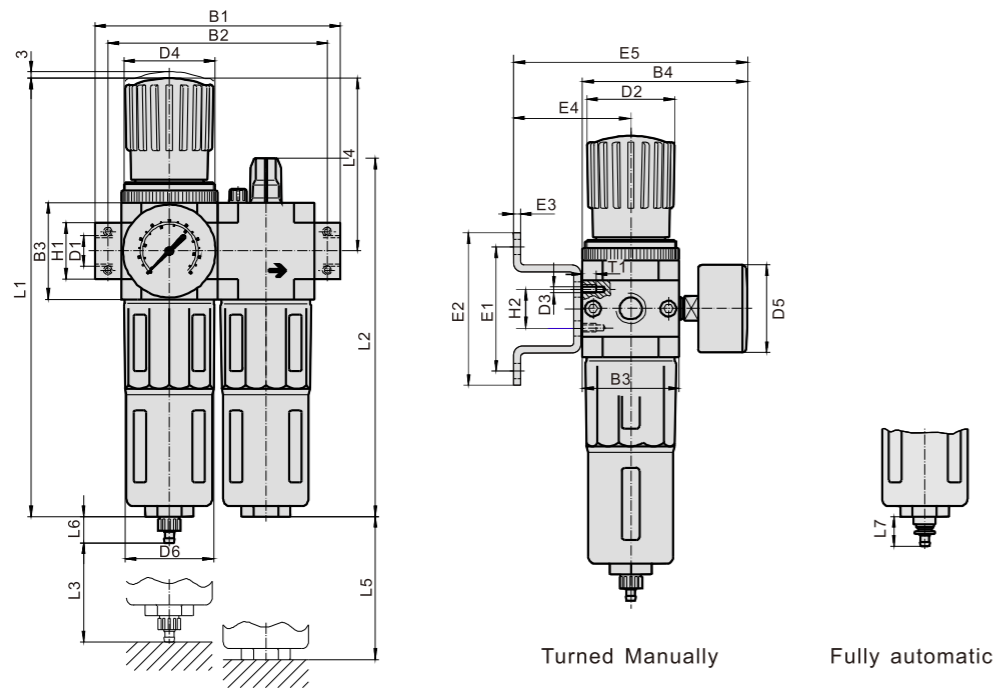
O Series Air Treatment Units

Internal Structure



NO.	Item	Material
1	Pressure knob	POM
2	Regulator cap	POM
3	Pressure spring	SWC
4	Flange-IN	Zinc alloy
5	Filter element	Brass
6	Manger	POM
7	Metal bowl guard	Aluminium alloy
8	Condensate drain	POM
9	Adjusting spindle	S35C
10	Upper glass	PC
11	OL body	Zinc alloy
12	Flange-OUT	Zinc alloy
13	Oil tube	PU
14	Lubricator bowl	PC
15	Metal bowl guard	Aluminium alloy
	O-Ring	NBR

Main Dimensions



Model	B1	B2	B3	B4	D1	D2	D3	D4	D5	D6	L1	L2	L3	L4	L5	L6	L7	H1	H2	E1	E2	E3	E4	E5
OU-MINI-1/8"	104	92	40	76	G1/8"	40	M4	M36*1.5	Φ40	Φ38	193	169	60	69	100	15	19	20	11	35	44	2	39	95
OU-MINI-1/4"	104	92	40	76	G1/4"	40	M4	M36*1.5	Φ40	Φ38	193	169	60	69	100	15	19	20	11	35	44	2	39	95
OU-MINI-3/8"	104	92	40	76	G3/8"	40	M4	M36*1.5	Φ40	Φ38	193	169	60	69	100	15	19	20	11	35	44	2	39	95
OU-MIDI-3/8"	140	125	55	93	G1/8"	55	M5	M52*1.5	Φ52	Φ52	250	206	80	97	120	15	19	32	22	60	71	3	47	112
OU-MIDI-1/2"	140	125	55	93	G1/2"	55	M5	M52*1.5	Φ52	Φ52	250	206	80	97	120	15	19	32	22	60	71	3	47	112
OU-MIDI-3/4"	140	125	55	93	G3/4"	55	M5	M52*1.5	Φ52	Φ52	250	206	80	97	120	15	19	32	22	60	71	3	47	112
OU-MIXI-3/4"	162	146	66	104	G3/4"	66	M5	M36*1.5	Φ63	Φ65	252	223	90	80	150	15	19	32	22	60	71	3	52	123
OU-MIXI-1"	182	157	66	104	G1"	66	M5	M36*1.5	Φ63	Φ65	252	223	90	80	150	15	19	40	22	60	71	3	52	123

O Series Air Treatment Units

Ordering Code OFR Series F.R Combination

O FR - 1/4 - □ - □ - MINI - □

Filter+Regulator

Port Size
G1/8"
G1/4"
G3/8"
G1/2"
G3/4"
G1"

Precision
Blank: 40µm
5M: 5µm

Pressure Gauge
Blank: 0.5-12bar
7: 0.5-7bar

Condensate Drain
Blank: Turned Manually
A: Fully automatic

MINI: Body width 40mm
MIDI: Body width 55mm
MAXI: Body width 66mm



Specifications

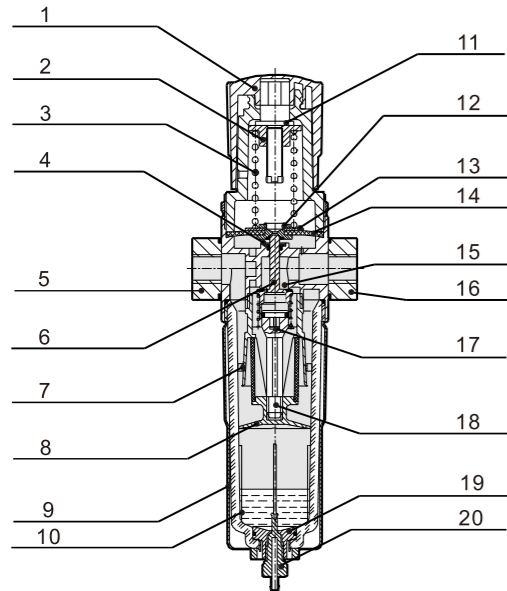
Specifications	MINI			MIDI			MAXI	
Port Size	G1/8"	G1/4"	G3/8"	G3/8"	G1/2"	G3/4"	G3/4"	G1"
Materials Information	Housing: Zinc die-casting; Filter bowl and oil: PC; Metal bowl guard: Aluminium alloy; Sealing: NBR; Adjusting knob: POM							
Working Medium	Compressed air							
Mounting Type	Pipe mounting or foot mounting							
Assembly Position	Vertical ±5°							
Features of Structure	Sintered filter with water separator; MINI/MIDI: Diaphragm type regulator; MAXI: Piston regulator; Direct constant-density lubricator.							
Primary Pressure	Turned Manually			0.1~1.6MPa				
	Fully automatic			0.15~1.2MPa				
Working Pressure	0.05~1.2MPa/0.05~0.7MPa							
Working Temperature Range	0~60°C							
Precision	40µm/5µm							
Capacity of Condensate Fluid	22ml			43ml			80ml	

Standard Rated Flow

Joint Size	G1/8"	G1/4"	G3/8"	G3/8"	G1/2"	G3/4"	G3/4"	G1"
MINI	OFR-...-D-	750	1400	1600	-	-	-	-
	OFR-...-D-7-...	900	1500	1700	-	-	-	-
	OFR-...-D-5M-...	650	120	1350	-	-	-	-
MIDI	OFR-...-D-	-	-	-	3100	3400	3400	-
	OFR-...-D-7-...	-	-	-	3200	3900	4000	-
	OFR-...-D-5M-...	-	-	-	2400	2600	2600	-
MAXI	OFR-...-D-	-	-	-	-	-	9700	10000
	OFR-...-D-7-...	-	-	-	-	-	10000	11000
	OFR-...-D-5M-...	-	-	-	-	-	7600	8000

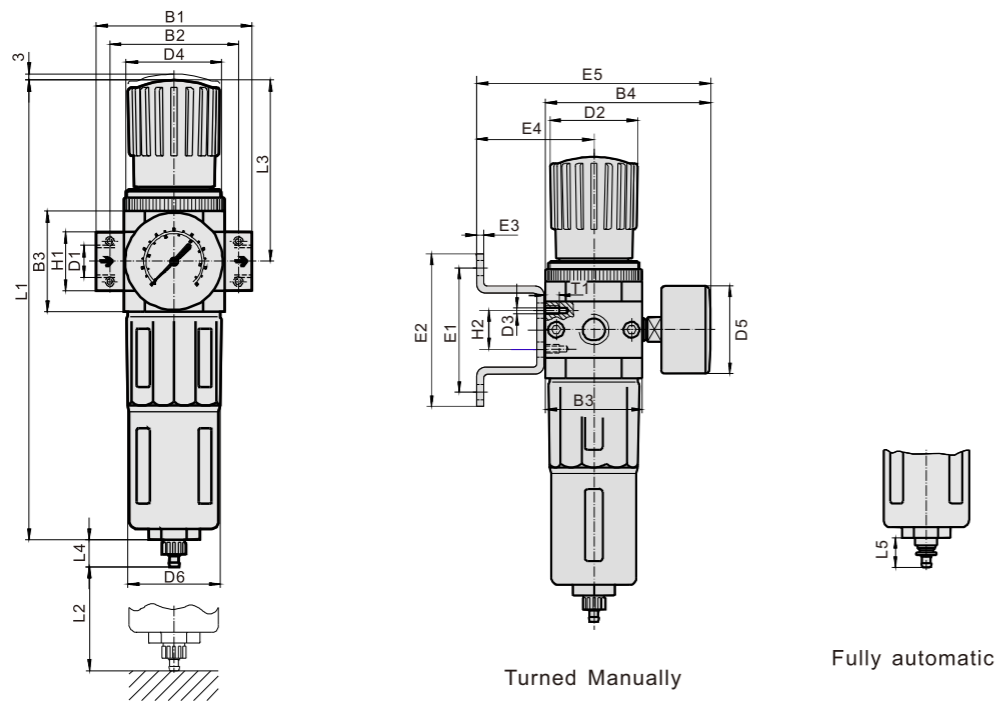
O Series Air Treatment Units

Internal Structure



NO.	Item	Material
1	Pressure knob	POM
2	Regulator nut	S35C
3	Pressure spring	SWC
4	One part of membrane	PA6+G15
5	Flange-IN	Zinc alloy
6	Spool	Brass
7	Filter element	PE
8	Manger	POM
9	Metal bowl guard	Aluminium alloy
10	Filter bowl	PC
11	Wearing sheet	Insulation sheet
12	Sheet	NBR
13	One part of diaphragm	SPCC
14	Diaphragm	NBR+Nylon
15	OR Body	Zinc alloy
16	Flange-OUT	Zinc alloy
17	Fasteners	Brass
18	Filter element base	POM
19	Inner joint	POM
20	Condensate drain	POM
	O-ring	NBR

Main Dimensions



Model	B1	B2	B3	B4	D1	D2	D3	D4	D5	D6	L1	L2	L3	L4	L5	H1	H2	E1	E2	E3	E4	E5
OFR-MINI-1/8"	64	52	40	76	G1/8"	Φ31	M4	M36*1.5	Φ40	Φ38	193	60	69	15	19	20	11	35	44	2	39	95
OFR-MINI-1/4"	64	52	40	76	G1/4"	Φ31	M4	M36*1.5	Φ40	Φ38	193	60	69	15	19	20	11	35	44	2	39	95
OFR-MINI-3/8"	64	52	40	76	G3/8"	Φ31	M4	M36*1.5	Φ40	Φ38	193	60	69	15	19	20	11	35	44	2	39	95
OFR-MIDI-3/8"	85	70	55	93	G1/8"	Φ50	M5	M52*1.5	Φ52	Φ52	250	80	97	15	19	32	22	60	71	3	47	112
OFR-MIDI-1/2"	85	70	55	93	G1/2"	Φ50	M5	M52*1.5	Φ52	Φ52	250	80	97	15	19	32	22	60	71	3	47	112
OFR-MIDI-3/4"	85	70	55	93	G3/4"	Φ50	M5	M52*1.5	Φ52	Φ52	250	80	97	15	19	32	22	60	71	3	47	112
OFR-MIXI-3/4"	96	80	66	104	G3/4"	Φ31	M5	M36*1.5	Φ63	Φ65	252	90	80	15	19	32	22	60	71	3	52	123
OFR-MIXI-1"	116	91	66	104	G1"	Φ31	M5	M36*1.5	Φ63	Φ65	252	90	80	15	19	40	22	60	71	3	52	123

O Series Air Treatment Units

Ordering Code OF Series Filter



Specifications

Specifications	MINI			MIDI			MAXI	
Port Size	G1/8"	G1/4"	G3/8"	G3/8"	G1/2"	G3/4"	G3/4"	G1"
Working Medium	Clean air							
Precision	40µm/5µm							
Materials Information	Housing: Zinc die-casting; Filter bowl and oil: PC; Metal bowl guard: Aluminium alloy; Sealing: NBR; Adjusting knob: POM							
Medium Temperature	0~60°C							
Ambient Temperature	0~60°C							
Mounting Type	Pipe mounting or foot mounting							
Assembly Position	Vertical ±5°							
Features of Structure	Sintered filter with water separator							
Max. Condensate Capacity	22ml			43ml			80ml	
Primary Pressure	Turned manually			0~1.6Mpa				
	Fully automatic			0.15-1.2Mpa				
Weight	250g			700g			1340g	1440g

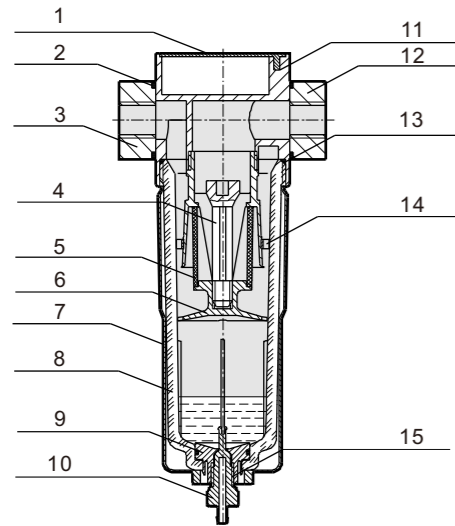
Standard Rated Flow

Joint Size	G1/8"	G1/4"	G3/8"	G3/8"	G1/2"	G3/4"	G3/4"	G1"
MINI	OF-...(-A)	1000	1200	1400	-	-	-	-
	OF-...-5M-...(-A)	800	950	1100	-	-	-	-
MIDI	OF-...(-A)	-	-	-	2700	3000	3000	-
	OF-...-5M-...(-A)	-	-	-	1800	2000	2000	-
MAXI	OF-...(-A)	-	-	-	-	-	5000	5300
	OF-...-5M-...(-A)	-	-	-	-	-	3600	3800

Note: The minimum flow required for normal operation is 5L/min

O Series Air Treatment Units

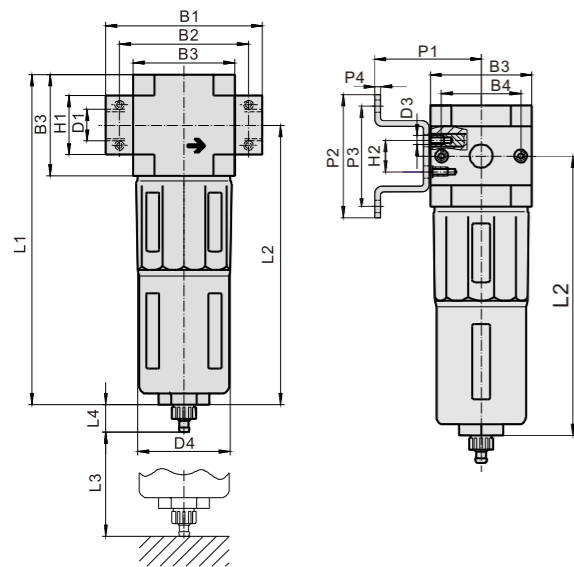
Internal Structure



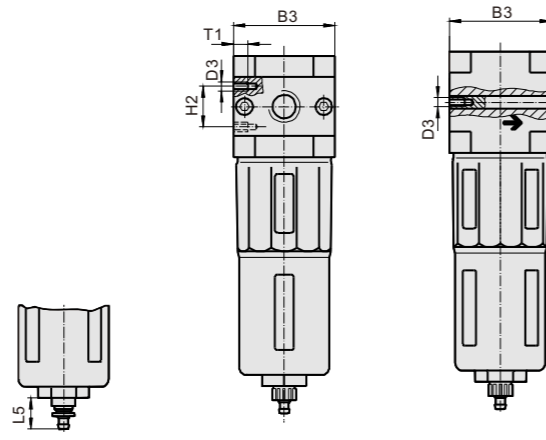
NO.	Item	Material
1	Ornament cover	POM
2	O-ring	NBR
3	Flange-IN	Zinc alloy
4	Filter element base	POM
5	Filter element	PE
6	Manger	POM
7	Metal bowl guard	Aluminium alloy
8	Filter bowl	PC
9	O-ring	NBR
10	Condensate drain	POM
11	OF Body	Zinc alloy
12	Flange-OUT	Zinc alloy
13	O-ring	NBR
14	Whirlwind impeller	POM
15	Inner joint	POM

Main Dimensions

With connecting plate



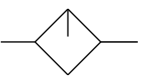
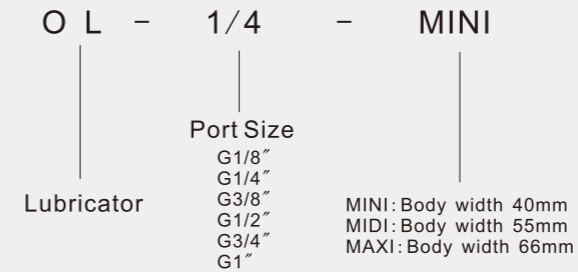
Without connecting plate



Model	B1	B2	B3	B4	D1	D3	D4	H1	H2	L1	L2	L3	L4	L5	P1	P2	P3	P4	T1
OF-MINI-1/8"	64	52	40	30	G1/8	M4	38	20	11	144	124	60	15	19	39	43	35	2	7
OF-MINI-1/4"	64	52	40	30	G1/4	M4	38	20	11	144	124	60	15	19	39	43	35	2	7
OF-MINI-3/8"	70	52	40	30	G3/8	M4	38	20	11	144	124	60	15	19	39	43	35	2	7
OF-MIDI-3/8"	85	70	55	43	G3/8	M5	52	32	22	179	151	80	15	19	47	70	60	3	8
OF-MIDI-1/2"	85	70	55	43	G1/2	M5	52	32	22	179	151	80	15	19	47	70	60	3	8
OF-MIDI-3/4"	85	70	55	43	G3/4	M5	52	32	22	179	151	80	15	19	47	70	60	3	8
OF-MAXI-3/4"	96	80	66	46	G3/4	M5	65	32	22	203	170	90	15	19	53	70	60	3	8
OF-MAXI-1"	116	91	66	46	G1	M5	65	40	22	203	170	90	15	19	53	70	60	3	8

O Series Air Treatment Units

Ordering Code OL Series Lubricator



Specifications

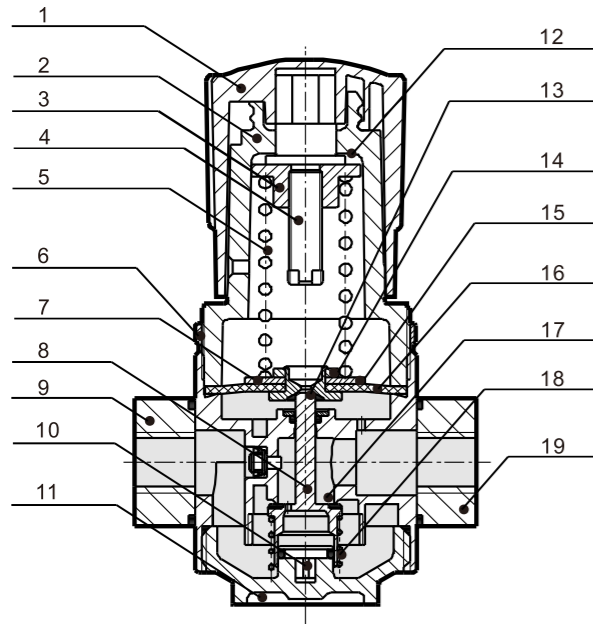
Specifications	MINI			MIDI			MAXI	
	G1/8"	G1/4"	G3/8"	G3/8"	G1/2"	G3/4"	G3/4"	G1"
Port Size	G1/8"	G1/4"	G3/8"	G3/8"	G1/2"	G3/4"	G3/4"	G1"
Working Medium	Clean air							
Max. Working Pressure	1.6MPa							
Min. Standard Nominal Flow Rate	3L/min			6L/min			10L/min	
Max. Condensate Capacity	22ml			43ml			80ml	
Max. Capacity of Oil cup	45ml			110ml			190ml	
Mounting Type	Pipe mounting or Leg mounting							
Medium Temperature	-10~60°C							
Ambient Temperature	-10~60°C							
Assembly Position	Vertical ±5°							
Materials	Housing: Zinc die-casting; Filter bowl and oil: PC; Metal bowl guard: Aluminium alloy; Sealing: NBR; Adjusting knob: POM							
Recommended oil	Turbine No1 Oil ISOVG32							
Features of Structure	The direct constant-density lubricator							
Weight	270g			630g			1100g	1200g

Standard Rated Flow

Joint Size	G1/8"	G1/4"	G3/8"	G3/8"	G1/2"	G3/4"	G3/4"	G1"
MINI	1300	2300	2700	-	-	-	-	-
MIDI	-	-	-	5500	6100	6300	-	-
MAXI	-	-	-	-	-	-	8400	9000

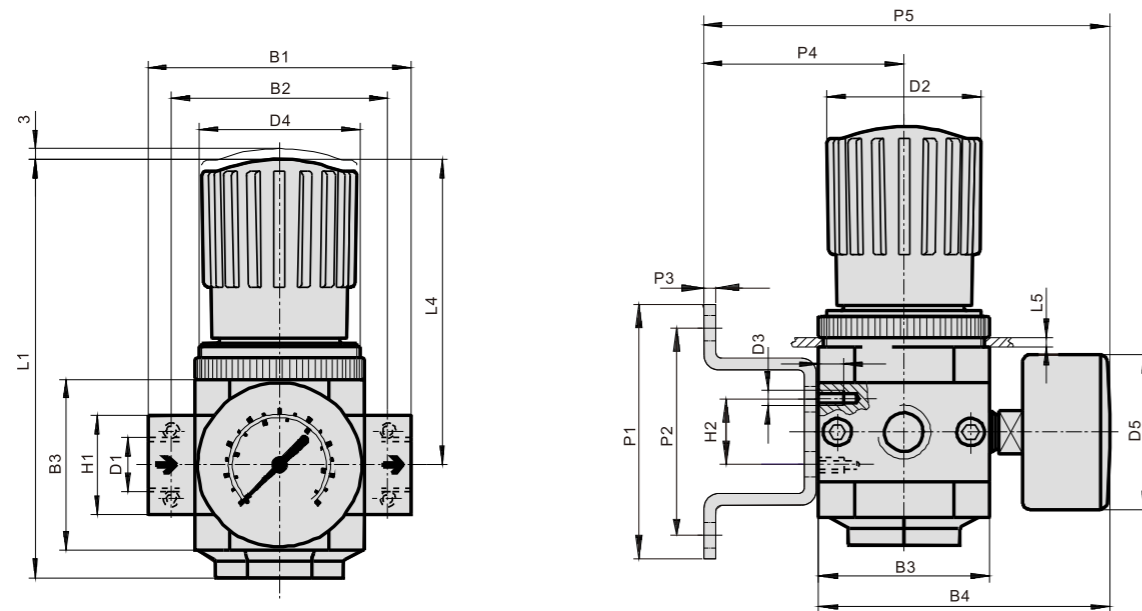
O Series Air Treatment Units

Internal Structure



NO.	Item	Material
1	Pressure knob	POM
2	Regulator cap	POM
3	Regulator nut	S35C
4	Adjusting spindle	S35C
5	Pressure spring	SWC
6	Fixed ring	6061-T6
7	One part of membrane	PA6+G15
8	Flange-IN	Zinc alloy
9	Spool	Brass
10	Fasteners	Brass
11	Locker cover	Zinc alloy
12	Wearing sheet	Insulation sheet
13	Sheet	NBR
14	Overflow base	6061-T6
15	One part of diaphragm	SPCC
16	Diaphragm	NBR+Nylon
17	OR Body	Zinc alloy
18	Flange-OUT	Zinc alloy
19	Spring	SWPB
	O-ring	NBR

Main Dimensions



Model	B1	B2	B3	B4	D1	D2	D3	D4	D5	H1	H2	L1	L4	L5	L6	L7	T1	P1	P2	P3	P4	P5
OR-MINI-1/8"	64	52	40	76	G1/8	31	M4	M36*1.5	Φ41	20	11	96	68	3	98	60	7	43	35	2	39	95
OR-MINI-1/4"	64	52	40	76	G1/4	31	M4	M36*1.5	Φ41	20	11	96	68	3	98	60	7	43	35	2	39	95
OR-MINI-3/8"	70	52	40	76	G3/8	31	M4	M36*1.5	Φ41	20	11	96	68	3	98	60	7	43	35	2	39	95
OR-MIDI-3/8"	85	70	55	95	G3/8	50	M5	M52*1.5	Φ50	32	22	135	99	5	130	60	8	70	60	3	47	112
OR-MIDI-1/2"	85	70	55	95	G1/2	50	M5	M52*1.5	Φ50	32	22	135	99	5	130	60	8	70	60	3	47	112
OR-MIDI-3/4"	85	70	55	95	G3/4	50	M5	M52*1.5	Φ50	32	22	135	99	5	130	60	8	70	60	3	47	112
OR-MAXI-3/4"	96	80	66	107	G3/4	31	M5	M36*1.5	Φ50	32	22	125	82	4	111	60	8	70	60	3	53	124
OR-MAXI-1"	116	91	66	107	G1	31	M5	M36*1.5	Φ50	40	22	125	82	4	111	60	8	70	60	3	53	124

O Series Air Treatment Units

Ordering Code ORB Series Pressure Regulator Combinations

ORB-1/4 - □ - □ - □ - □ MINI

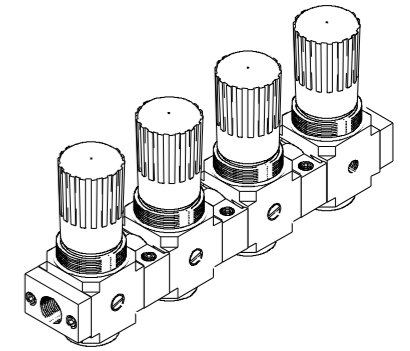
Port Size: G1/8", G1/4", G3/8", G1/2", G3/4", G1"

Pressure gauge: Blank: With pressure gauge, 0: Without pressure gauge

Pressure Range: Blank: 0.5-12bar, 7: 0.5-7bar

Functions: K2: Manifold with 2 pressure regulators, K3: Manifold with 3 pressure regulators, K4: Manifold with 4 pressure regulators, K5: Manifold with 5 pressure regulators

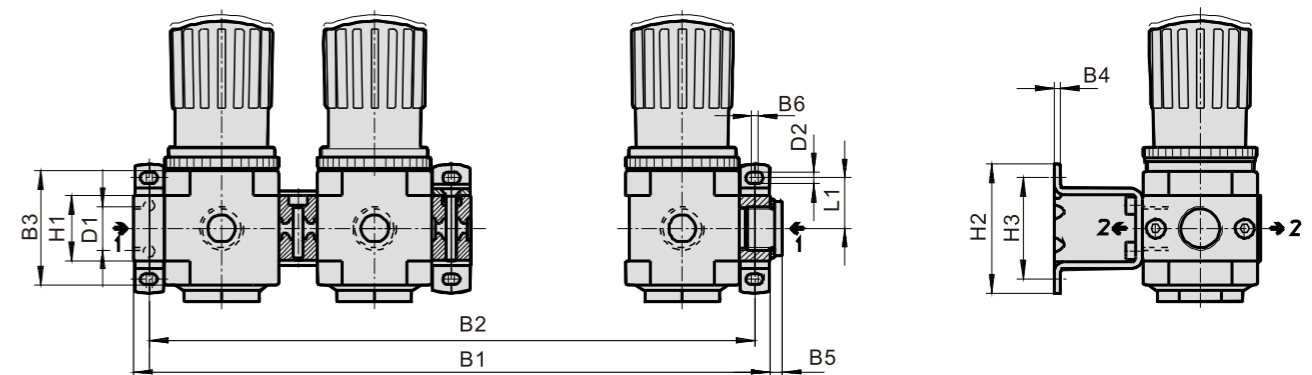
MINI: Body width 40mm, MIDI: Body width 55mm, MAXI: Body width 66mm



Specifications

Specifications	MINI	MIDI
Working Medium	Compressed air	
Type of Mounting	Via accessory	
Assembly Position	Arbitrary position	
Pressure Regulation Range	0.05~0.7MPa 0.05~1.2MPa	
Standard Rated Flow	0.05~0.7MPa: 1800L/min 0.05~1.2MPa: 1600L/min	3800L/min 3200L/min
Working Temperature Range	0~60°C	

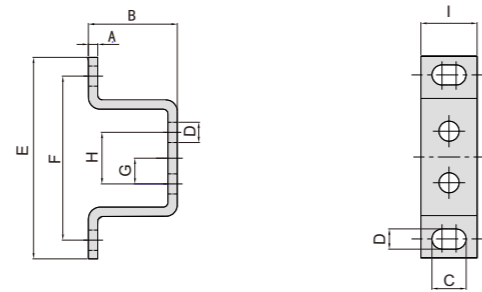
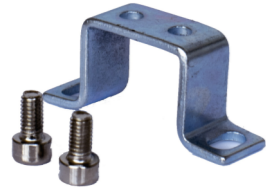
Main Dimensions



Model	B1					B2					B3	B4	B5	B6	D1	D2	H1	H2	H3	L1
	K2	K3	K4	K5	K2	K3	K4	K5												
MINI	ORB-1/4"	119	174	229	284	107	162	217	272	40	2	59	7.3	G1/4	4.3	20	47.3	35	17.5	
	ORB-3/8"	125	180	235	290	107	162	217	272	40	2	59	7.3	G3/8	4.3	20	47.3	35	17.5	
MIDI	ORB-3/8"	159	233	307	381	144	218	292	366	55	3	70.5	8.3	G3/8	5.3	32	62.3	49	31.2	
	ORB-1/2"	159	233	307	381	144	218	292	366	55	3	70.5	8.3	G1/2	5.3	32	62.3	49	31.2	

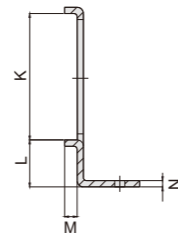
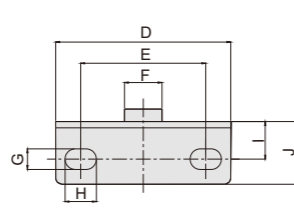
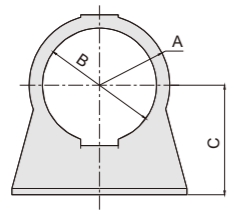
O Series Accessories

■ Mounting bracket OHC



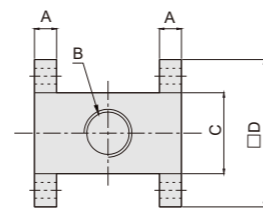
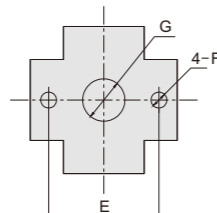
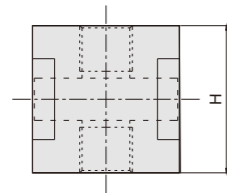
Model	A	B	C	D	E	F	G	H	I	Type
MINI	2	19	7.3	4.3	43	35	5.5	11	12	OHC-MINI
MIDI	3	19	8.3	5.3	43	35	16.5	22	14	OHC-MIDI
MAXI	3	19	8.3	5.3	70	60	16.5	22	14	OHC-MAXI

■ Mounting bracket OHO



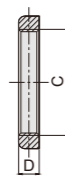
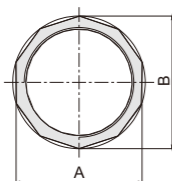
Model	A	B	C	D	E	F	G	H	I	J	K	L	M	N	Type
MINI	22.5	36.5	35	56	40	12	6.5	10	12	20	40.4	15	4	2	OHO-MINI
MIDI	30	52.5	48	70	35	12	8.5	10.5	17.5	27	55.5	20	4	2	OHO-MIDI
MAXI	22.5	36.5	35	56	40	12	6.5	10	12	20	40.4	15	4	2	OHO-MAXI

■ Branching modules FRM



Model	A	B	C	D	E	F	G	H	Type
MINI	6	G1/8, G1/4, G3/8	22	40	30	4.3	11.5	40	FRM-...-MINI
MIDI	8	G3/8, G1/2, G3/4	32	55	43	5.5	16	55	FRM-...-MIDI

■ Nut HMR



Model	A	ΦB	C	D	Type
MINI	44	45	M36*1.5	7	HMR-MINI
MIDI	60	62	M52*1.5	8	HMR-MIDI
MAXI	44	45	M36*1.5	7	HMR-MAXI

■ Pressure Gauge OMA



Model	Normal size	Pneumatic connection	Indicating range
OMA-40-10-1/8	40	G1/8	0-10bar
OMA-40-16-1/8			0-16bar
OMA-50-10-1/4	50	G1/4	0-10bar
OMA-50-16-1/4			0-16bar

A Series Air Treatment Units

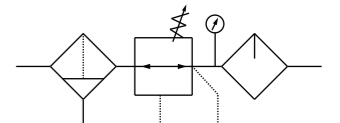
Ordering Code F.R.L Combination

AC	30	00	-	03	-	□
10:1000 Body Size	20:2000 Body Size	30:3000 Body Size	40:4000 Body Size	50:5000 Body Size	M5:M5	01:1/8"
					02:1/4"	03:3/8"
					04:1/2"	06:3/4"
					10:1"	
Filter+Regulator+Lubricator			00: Three Elements (Filter+Regulator+Lubricator)		Blank: Manual Drain Type D: Auto Drain Type (Available only For 2000 or Above)	



Specifications

Guaranteed pressure resistance	1.5MPa
Max. working pressure	1.0MPa
Working temperature	5~60°C
Filter precision	25 μm(5 μm is optional)
Recommended oil	Turbine No1 Oil ISOVG32
Bowl material	Polycarbonate
Bowl guard	AC1000~2000 (None) AC2500~5000 (Available)
Pressure adjusting range	AC1000: 0.05~0.7Mpa AC2000~5000: 0.05~0.85Mpa
Valve type	With overflow



Note: NPT, PT Port size is optional

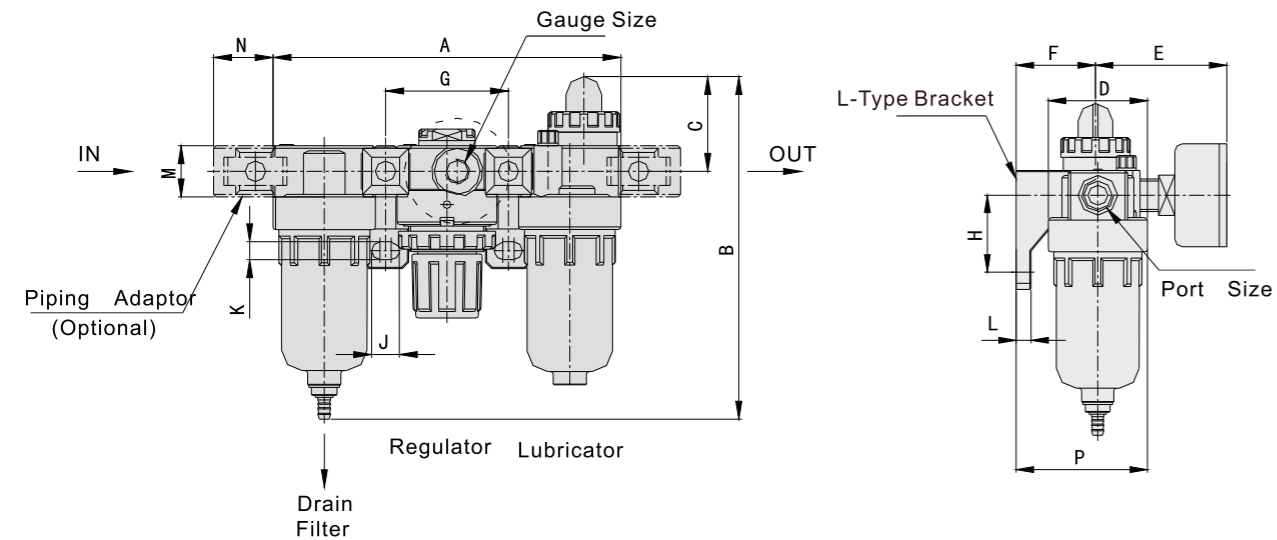
Model	Specifications						Accessories	
	Filter	Regulator	Lubricator	Rated flow (L/min)	Port size (G)	Pressure gauge thread size(G)	Weight (Kg)	Bracket (2Pcs)
AC1000-M5	AF1000	AR1000	AL1000	90	M5	1/16	0.26	Y10L
AC2000-01	AF2000	AR2000	AL2000	500	G1/8"	1/8	0.74	Y20L
AC2000-02					G1/4"			
AC2500-02	AF3000	AR2500	AL3000	1500	G1/4"	1/8	1.04	Y30L
AC2500-03					G3/8"			
AC3000-02	AF3000	AR3000	AL3000	2000	G1/4"	1/8	1.18	Y30L
AC3000-03					G3/8"			
AC4000-03	AF4000	AR4000	AL4000	4000	G3/8"	1/4	2.14	Y40L
AC4000-04					G1/2"			
AC4000-06	AF4000-06	AR4000-06	AL4000-06	4500	G3/4"	1/4	2.47	Y50L
AC5000-06	AF5000	AR5000	AL5000	5000	G3/4"	1/4	3.82	Y60L
AC5000-10					G1"			

Note: The above information is based on 0.7Mpa(7.1kgf/cm²) supply pressure and 0.5Mpa(5.1kgf/cm²) setted pressure

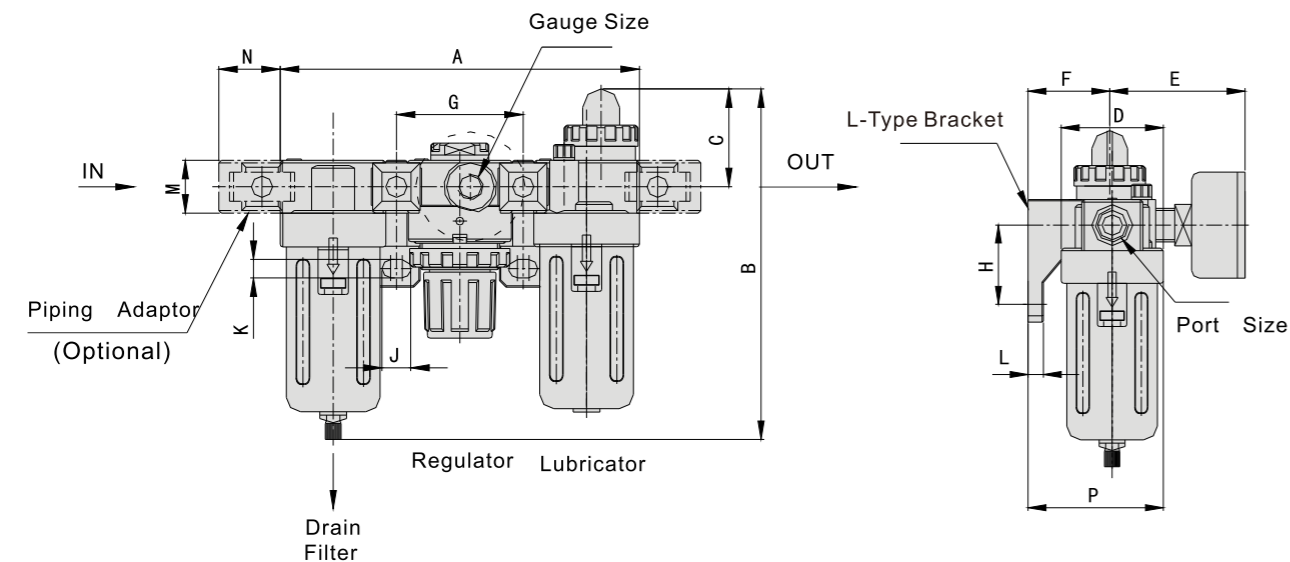
A Series Air Treatment Units

Main Dimensions

AC1000-2000



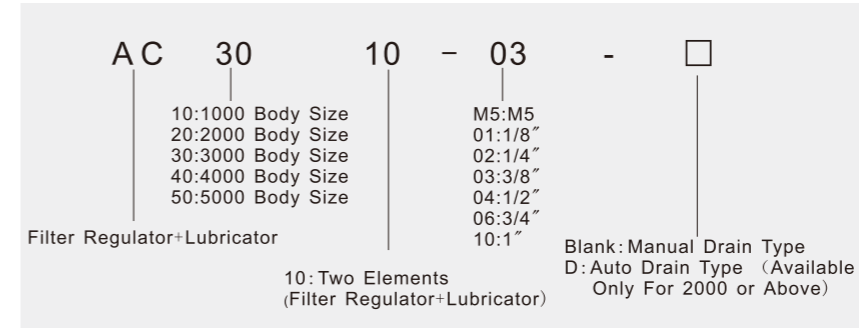
AC2500-5000



Model	Port Size	A	B	C	D	E	F	G	H	J	K	L	M	N	P
AC1000	M5	91	84.5	25.5	25	26	25	33	20	4.5	7.5	5	17.5	16	38.5
AC2000	1/8~1/4	140	125	38	40	56.8	30	50	24	5.5	8.5	5	22	23	50
AC2500	1/4~3/8	181	156.5	38	53	60.8	41	64	35	7	11	7	34.2	26	70.5
AC3000	1/4~3/8	181	156.5	38	53	60.8	41	64	35	7	11	7	34.2	26	70.5
AC4000	3/8~1/2	238	191.5	41	70	65.5	50	84	40	9	13	7	42.2	33	88
AC4000-06	3/4	253	193	40.5	70	69.5	50	89	40	9	13	7	46.2	36	88
AC5000	3/4~1	300	271.5	48	90	75.5	69.8	105	50	12	16	10.5	55.2	40	115

A Series Air Treatment Units

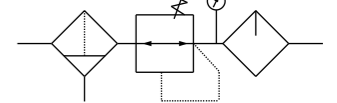
Ordering Code F.R.L Combination



Specifications

Guaranteed pressure resistance	1.5MPa
Max working pressure	1.0MPa
Working temperature	5~60°C
Filter precision	25 μm(5 μm is optional)
Recommended oil	Turbine No1 Oil ISOVG32
Bowl material	Polycarbonate
Bowl guard	AC1010~2010 (None) AC3010~5010 (Available)
Pressure adjusting range	AC1010: 0.05~0.7MPa AC2010~5010: 0.05~0.85MPa
Valve type	With overflow

Note: NPT, PT Port size is optional



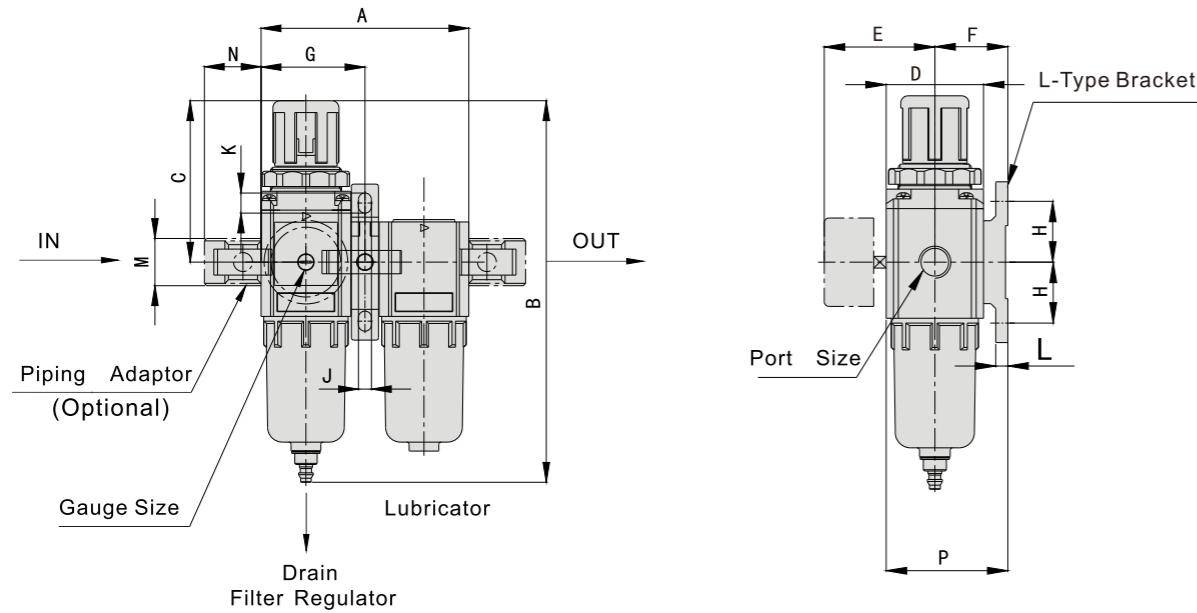
Model	Specifications					Accessories		
	Filter	Regulator	Lubricator	Rated flow (L/min)	Port size (G)	Pressure gauge thread size(G)	Weight (Kg)	Bracket (2Pcs)
AC1010-M5	AW1000	AL1000	90	M5	1/16	0.22	Y10T	G27-10-R1
AC2010-01	AW2000	AL2000	500	G1/8"	1/8	0.66	Y20T	G36-10-01
AC2010-02				G1/4"				
AC3010-02	AW3000	AL3000	1700	G1/4"	1/8	0.98	Y30T	
AC3010-03				G3/8"				
AC4010-03	AW4000	AL4000	3000	G3/8"	1/4	1.93	Y40T	G46-10-02
AC4010-04				G1/2"				
AC4010-06	AW4000-06	AL4000-06	3000	G3/4"	1/4	1.99	Y50T	
AC5010-06				G3/4"				
AC5010-10	AW5000	AL5000	4000	G1"	1/4	3.20	Y60T	

Note: The above information is based on 0.7Mpa(7.1kgf/cm²) supplied pressure and 0.5Mpa(5.1kgf/cm²) setted pressure

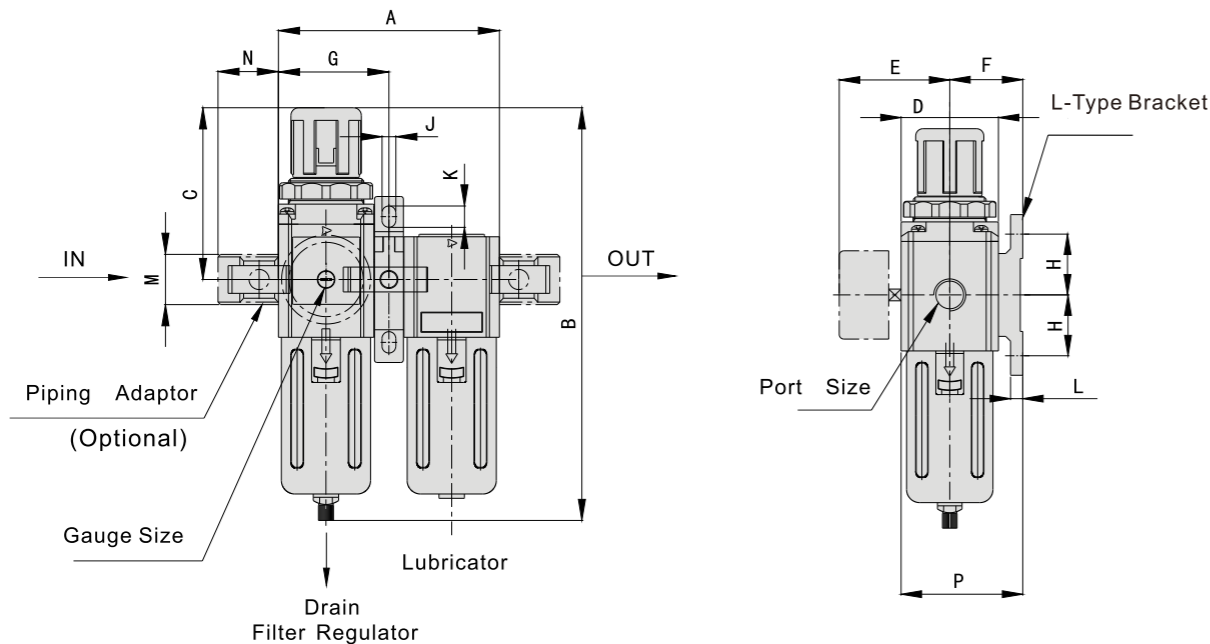
A Series Air Treatment Units

Main Dimensions

AC1010-2010



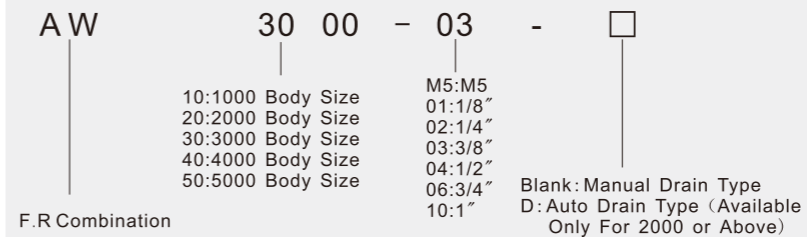
AC3010-5010



Model	Port Size	A	B	C	D	E	F	G	H	J	K	L	M	N	P
AC1010	M5	58	109.5	50.5	25	26	25	29	20	4.5	7.5	5	17.5	16	38.5
AC2010	1/8~1/4	90	164.5	78	40	56.8	30	45	24	5.5	8.5	5	22	23	50
AC3010	1/4~3/8	117	211	92.5	53	60.8	41	58.5	35	7	11	7	34.2	26	70.5
AC4010	3/8~1/2	154	262	112	70	70.5	50	77	40	9	13	7	42.2	33	88
AC4010-06	3/4	164	267	114	70	70.5	50	82	40	9	13	7	46.2	36	88
AC5010	3/4~1	195	338	116	90	75.5	69.8	97.5	50	12	16	10.5	55.2	40	115

A Series Air Treatment Units

Ordering Code AW Series F.R Combination



Specifications

Guaranteed pressure resistance	1.5MPa
Max.working pressure	1.0MPa
Working temperature	5~60°C
Filter precision	25µm
Bowl material	Polycarbonate
Bowl guard	AW1000~2000(None) AW3000~5000(Available)
Pressure adjusting range	AW1000:0.05~0.7Mpa(0.5~0.7kgf/cm ²) AW2000~5000:0.05~0.85Mpa(0.5~8.5kgf/cm ²)
Valve type	With overflow

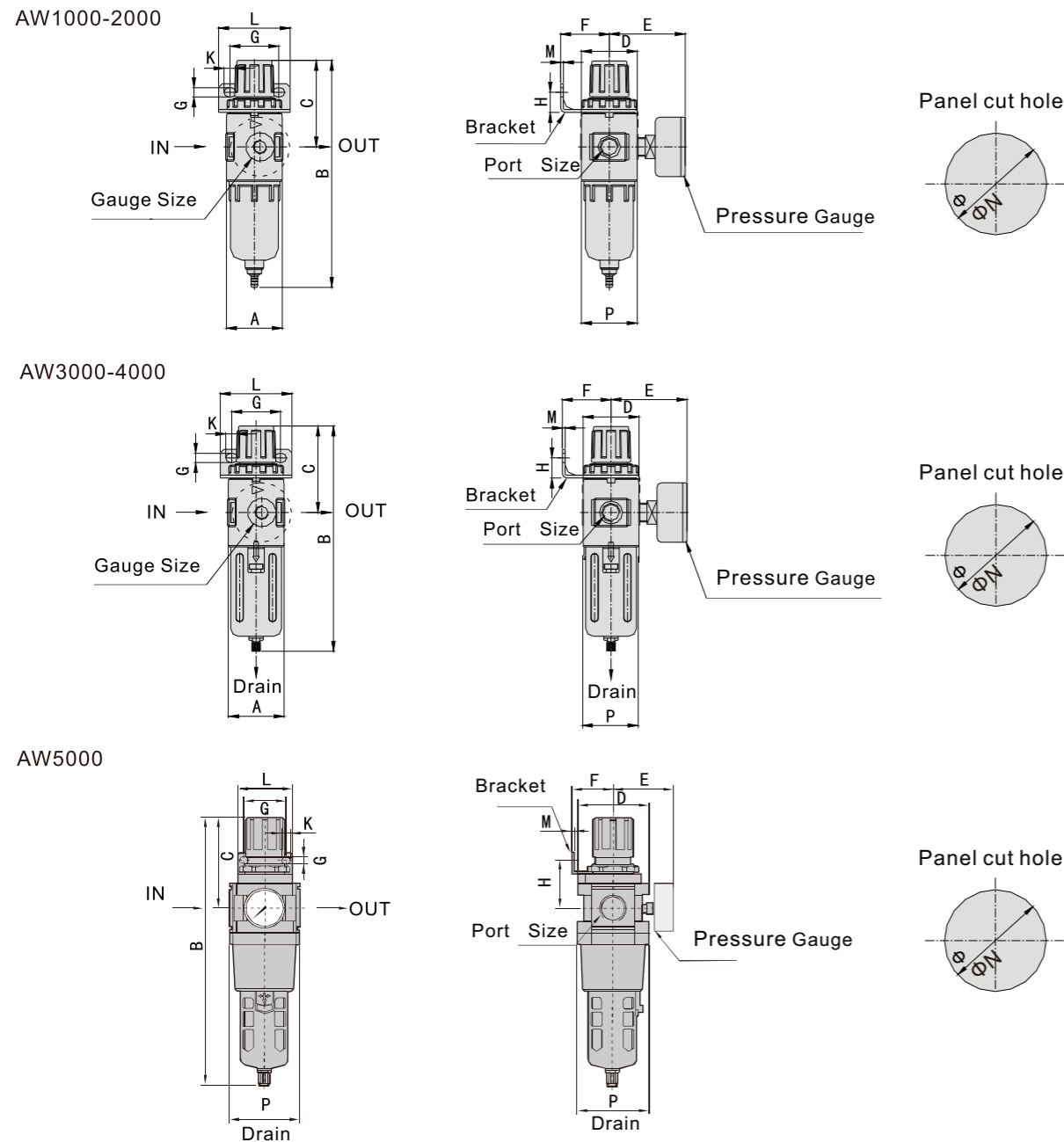
Note: NPT, PT Port size is optional

Model	Specifications				Accessories	Drain function	Auto drain model
	Rated flow (L/min)	Port size (G)	Pressure gauge thread size(G)	Weight (Kg)			
AW1000-M5	100	M5	G1/16	0.09	B120	Manual drain	-
AW2000-01	550	G1/8"	G1/8	0.36	B220	Manual drain	AW2000-01D
AW2000-02		G1/4"					AW2000-02D
AW3000-02	2000	G1/4"	G1/8	0.56	B320	A.Zero pressure drain B.Manual drain	AW3000-02D
AW3000-03		G3/8"					AW3000-03D
AW4000-03	4000	G3/8"	G1/4	1.15	B420		AW4000-03D
AW4000-04		G1/2"					AW4000-04D
AW4000-06	4500	G3/4"	G1/4	1.21	B420		AW4000-06D
AW5000-06	5500	G3/4"	G1/4	1.70	B420		AW5000-06D
AW5000-10		G1"				AW5000-10D	

Note: The above information is based on 0.7Mpa(7.1kgf/cm²) supplied pressure and 0.5Mpa(5.1kgf/cm²) setted pressure

A Series Air Treatment Units

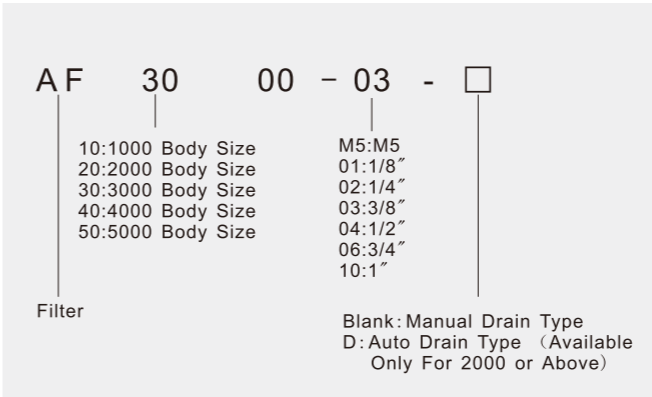
Main Dimensions



Model	Port Size	A	B	C	D	F	G	H	J	K	L	M	N	P
AW1000-M5	M5	25	109.5	50.5	25	25	28	30	4.5	6.5	40	2	20.5	28
AW2000-01	1/8"	40	164.5	78	40	30	34	43.5	5.4	15.4	55	2.3	33.5	40
AW2000-02	1/4"	40	164.5	78	40	30	34	43.5	5.4	15.4	55	2.3	33.5	40
AW3000-02	1/4"	53	211	92.5	53	39	40	46	6.5	8	53	2.3	42.5	56
AW3000-03	3/8"	53	211	92.5	53	39	40	46	6.5	8	53	2.3	42.5	56
AW4000-03	3/8"	70	262	112	70	49.2	54	53.5	8.5	10.5	70	2.3	52.5	73
AW4000-04	1/2"	75	267	114	70	49.2	54	53.5	8.5	10.5	70	2.3	52.5	73
AW4000-06	3/4"	70	262	112	70	49.2	54	53.5	8.5	10.5	70	2.3	52.5	73
AW5000-06	3/4"	90	338	116	90	49.2	54	62	8.5	10.5	70	2.3	52.5	90
AW5000-10	1"	90	338	116	90	49.2	54	62	8.5	10.5	70	2.3	52.5	90

A Series Air Treatment Units

Ordering Code AF Series Air Filter



Specifications

Guaranteed pressure resistance	1.5MPa
Max. working pressure	1.0MPa
Working temperature	5~60°C
Filter precision	25µm
Bowl material	Aluminum
Bowl guard	AF1000~2000 (None) / AF3000~5000 (Available)
Body Material	Aluminum
Pressure adjusting range	0.05~0.85MPa
Water cup	Polycarbonate
Core Material	Brass

Note: NPT, PT Port size is optional

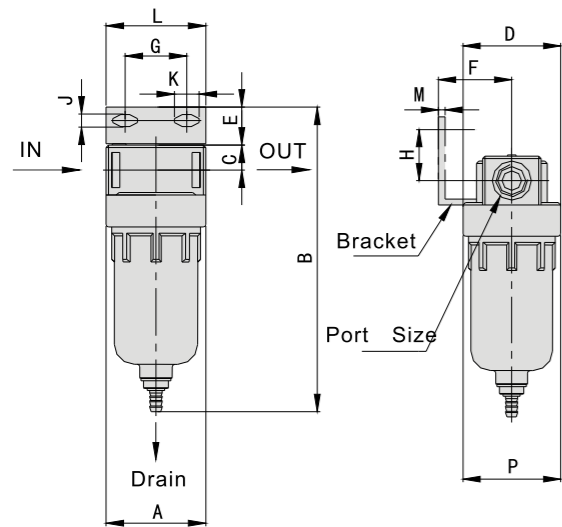
Model	Specifications				Accessories	Drain function	Auto drain model
	Rated flow (L/min)	Port size (G)	Bowl capacity (cm³)	Weight (Kg)			
AF1000-M5	110	M5	4	0.07	-	Manual drain	AF2000-01D AF2000-02D
AF2000-01	750	G1/8"	15	0.19	B240		
AF2000-02		G1/4"					
AF3000-02	1500	G1/4"	20	0.29	B340	A.Zero pressure drain B.Manual drain	AF3000-02D
AF3000-03		G3/8"					AF3000-03D
AF4000-03	4000	G3/8"	45	0.55	B440		AF4000-03D
AF4000-04		G1/2"					AF4000-04D
AF4000-06	6000	G3/4"	45	0.58	B540	AF4000-06D	
AF5000-06	7000	G3/4"	130	1.08	B640	AF5000-06D	
AF5000-10		G1"				AF5000-10D	

Note: The above information is based on 0.7Mpa(7.1kgf/cm²) supplied pressure and 0.5Mpa(5.1kgf/cm²) setted pressure

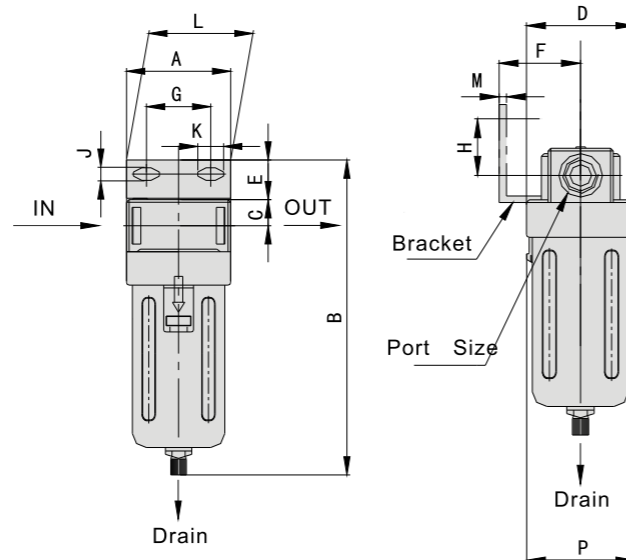
A Series Air Treatment Units

Main Dimensions

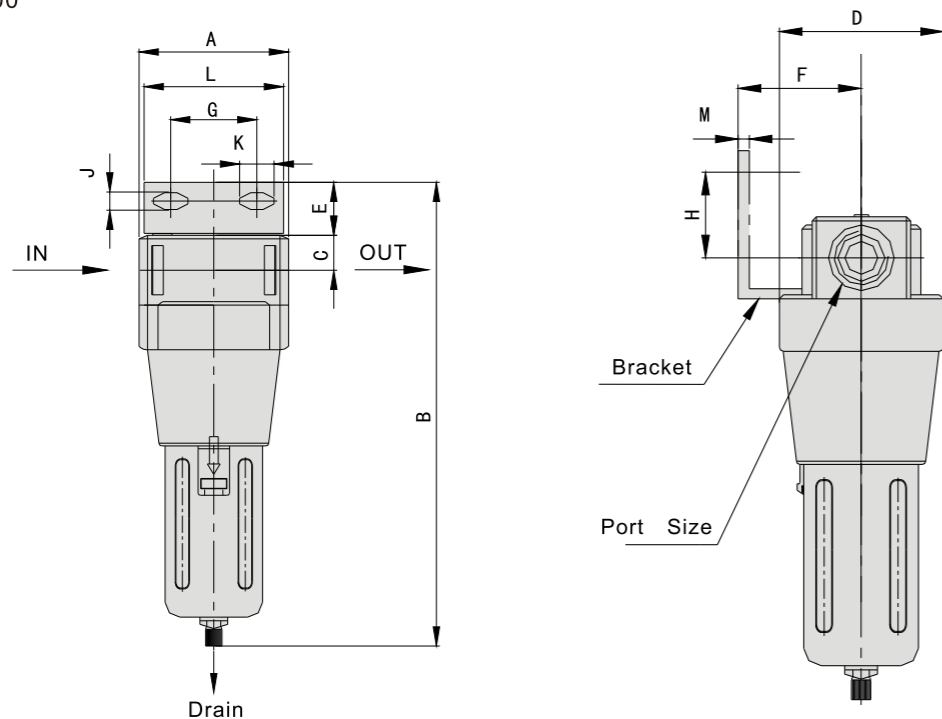
AF1000-2000



AF3000-4000



AF5000



Model	Port Size	A	B	C	D	E	F	G	H	J	K	L	M	P
AF1000	M5	25	66	7	25	-	-	-	-	-	-	-	-	26.5
AF2000	1/8~1/4	40	97.5	11	40	17	30	27	22	5.4	8.4	40	2.3	40
AF3000	1/4~3/8	53	132.5	14	53	16	41	40	23	6.5	8	53	2.3	56
AF4000	3/8~1/2	70	168.5	18	70	17	50	54	26	8.5	10.5	70	2.3	73
AF4000-06	3/4	75	172.5	20	70	14	50	54	25	8.5	10.5	70	2.3	73
AF5000	3/4~1	90	247.5	24	90	23	66.5	66	35	11	13	90	3.2	90

A Series Air Treatment Units

Ordering Code AL Series Lubricator

AL	30	00	-	03
AL Series Lubricator	10:1000 Body Size 20:2000 Body Size 30:3000 Body Size 40:4000 Body Size 50:5000 Body Size			M5:M5 01:1/8" 02:1/4" 03:3/8" 04:1/2" 06:3/4" 10:1"



Specifications

Guaranteed pressure resistance	1.5MPa
Max.working pressure	1.0MPa
Working temperature	5~60°C
Recommended oil	Turbine No1 Oil ISOVG32
Bowl material	Polycarbonate
Bowl guard	AL1000~2000(None) AL3000~5000(Available)
Valve type	With overflow

Model	Specifications					Accessories
	*Minimal flow of oil drop (L/min)	Rated flow (L/min)	Port size (G)	Bowl capacity (cm³)	Weight (Kg)	Bracket
AL1000-M5	4	95	M5	7	0.07	-
AL2000-01	15	800	G1/8"	25	0.22	B240
AL2000-02			G1/4"			
AL3000-02	30	1700	G1/4"	50	0.30	B340
AL3000-03	40		G3/8"			
AL4000-03	40	5000	G3/8"	130	0.56	B440
AL4000-04	50		G1/2"			
AL4000-06	50	6300	G3/4"	130	0.58	B540
AL5000-06	190	7000	G3/4"	130	1.08	B640
AL5000-10			G1"			

Note: * The above information is based on 0.51Mpa supplied pressure, the flow of oil drop is 2~3 drop/min.

* The temperature of Turbine No.1 oil is 20°C.

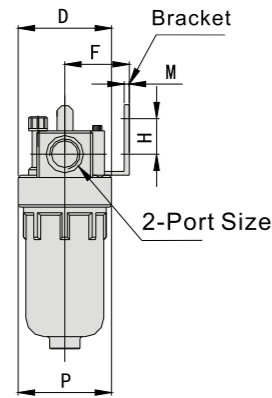
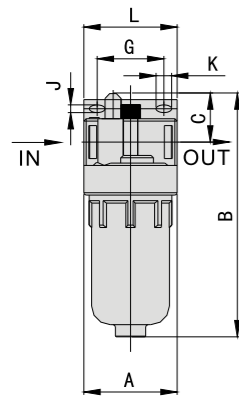
* The above information is based on 0.51Mpa supplied pressure and 0.03Mpa step down.

* NPT, PT port size is optional.

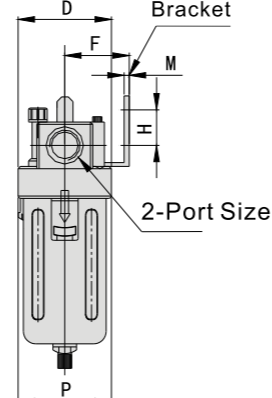
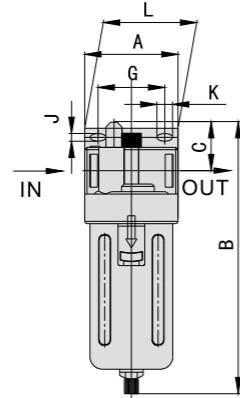
A Series Air Treatment Units

Main Dimensions

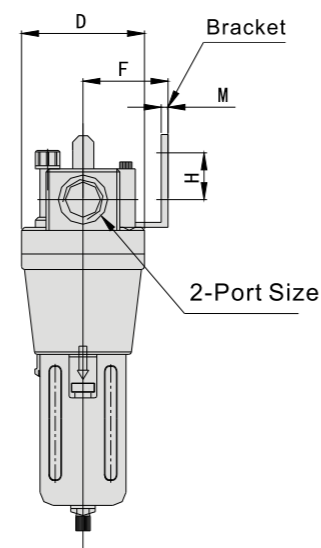
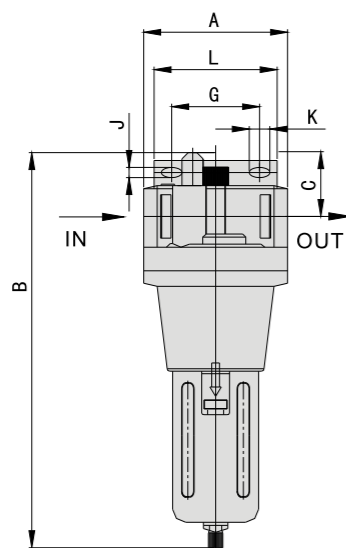
AL1000-2000



AL3000-4000



AL5000



Model	Port Size	A	B	C	D	F	G	H	J	K	L	M	P
AL1000-M5	M5	25	81.5	25.5	25	-	-	-	-	-	-	-	27
AL2000-01	1/8"	40	122	38	40	30	27	22	5.4	8.4	40	2.3	40
AL2000-02	1/4"	40	122	38	40	30	27	22	5.4	8.4	40	2.3	40
AL3000-02	1/4"	53	142	38	53	41	40	23	6.5	8	53	2.3	56
AL3000-03	3/8"	53	142	38	53	41	40	23	6.5	8	53	2.3	56
AL4000-03	3/8"	70	177	41	70	50	54	26	8.5	10.5	70	2.3	73
AL4000-04	1/2"	75	177	39	70	50	54	25	8.5	10.5	70	2.3	73
AL4000-06	3/4"	75	177	39	70	50	54	25	8.5	10.5	70	2.3	73
AL5000-06	3/4"	90	254	45	90	66.5	66	35	11	13	90	3.2	90
AL5000-10	1"	90	254	45	90	66.5	66	35	11	13	90	3.2	90

A Series Air Treatment Units

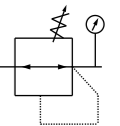
Ordering Code AR Series Air Regulator

AR 30 00 - 03

Regulator

10:1000 Body Size
20:2000 Body Size
30:3000 Body Size
40:4000 Body Size
50:5000 Body Size

M5:M5
01:1/8"
02:1/4"
03:3/8"
04:1/2"
06:3/4"
10:1"



Specifications

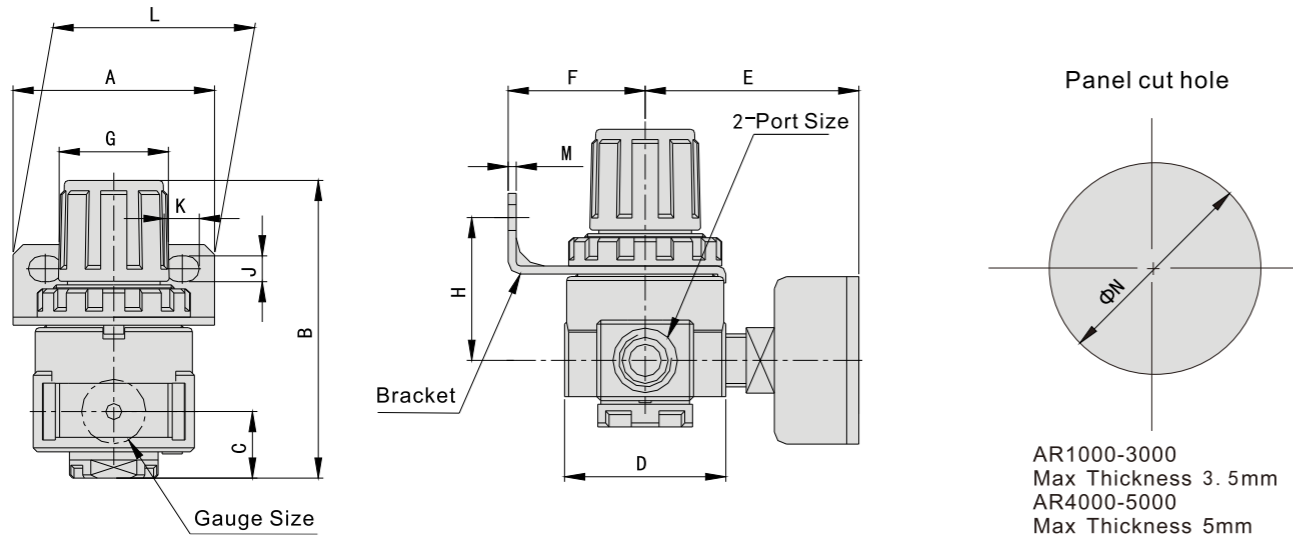
Guaranteed pressure resistance	1.5MPa
Max.working pressure	1.0MPa
Working temperature	5~60°C
Pressure adjusting range	0.05~0.85MPa
Valve type	With overflow

Model	Specifications				Accessories
	Rated flow (L/min)	Port size (G)	Pressure gauge thread size (G)	Weight (Kg)	Bracket
AR1000-M5	100	M5"	G1/16"	0.08	B120
AR2000-01	550	G1/8"	G1/8"	0.27	B220
AR2000-02		G1/4"			
AR2500-02	2000	G1/4"	G1/8"	0.27	B220
AR2500-03		G3/8"			
AR3000-02	2500	G1/4"	G1/8"	0.41	B320
AR3000-03		G3/8"			
AR4000-03	6000	G3/8"	G1/4"	0.84	B420
AR4000-04		G1/2"			
AR4000-06	6000	G3/4"	G1/4"	0.94	
AR5000-06	8000	G3/4"	G1/4"	1.19	
AR5000-10		G1"			

Note: The above information is based on 0.7Mpa(7.1kgf/cm²) supplied pressure 0.5Mpa(5.1kgf/cm²) setted pressure

A Series Air Treatment Units

Main Dimensions



Model	Port Size	A	B	C	D	E	F	G	H	J	K	L	M	N
AR1000-M5	M5	25	61.5	11	25	26	25	28	30	4.5	6.5	40	2	20.5
AR2000-01	1/8"	40	95	17	40	56.8	30	34	44	5.4	15.4	55	2.3	33.5
AR2000-02	1/4"	40	95	17	40	56.8	30	34	44	5.4	15.4	55	2.3	33.5
AR2500-02	1/4"	53	102.5	25	48	60.8	30	34	44	5.4	15.4	55	2.3	33.5
AR2500-03	3/8"	53	102.5	25	48	60.8	30	34	44	5.4	15.4	55	2.3	33.5
AR3000-02	1/4"	53	127.5	35	53	60.8	39	40	46	6.5	8	53	2.3	42.5
AR3000-03	3/8"	53	127.5	35	53	60.8	39	40	46	6.5	8	53	2.3	42.5
AR4000-03	3/8"	75	154	40.5	70	69.5	49.2	54	55.5	8.5	10.5	70	2.3	52.5
AR4000-04	1/2"	70	149.5	37.5	70	65.5	49.2	54	54	8.5	10.5	70	2.3	52.5
AR4000-06	3/4"	75	154	40.5	70	69.5	49.2	54	55.5	8.5	10.5	70	2.3	52.5
AR5000-06	3/4"	90	168	48	90	75.5	49.2	54	62	8.5	10.5	70	2.3	52.5
AR5000-10	1"	90	168	48	90	75.5	49.2	54	62	8.5	10.5	70	2.3	52.5

ARM5 Series Regulator



Ordering Code ARM5 Series Regulator

ARM5 S A - 04 - □ □

Single unit type Regulator mounting Accessory Semi-standard

A: Direct mount
B: DIN rail mount*

* Both the square nut and the hexagon socket head screw are attached for the DIN rail mount type (DIN rail is not attached.)

Nil: Without pressure gauge
A: With pressure gauge

IN/OUT port size
04: Φ4 straight
06: Φ6 straight

Symbol	None	0.35MPa setting*	Non-relieving
Nil	●		
1		●	
2			●
3		●	●

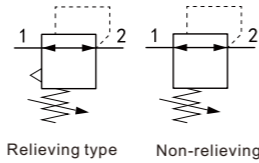
* A pressure gauge with a full span of 0.8 MPa is attached.

Specifications

Model	ARM5S	
Regulator construction	Direct acting	
Working principle	Piston type	
Relief mechanism	Standard	Relieving type
	Semi-standard	Non-relieving type
Backflow function	Within(unbalanced type)	
IN side tubing O.D.	Φ4, Φ6	
OUT side tubing O.D.	Φ4, Φ6	
Proof pressure	1.5MPa	
Max. working pressure	1.0MPa	
Set pressure range	Standard	0.05 to 0.7MPa
	Semi-standard	0.05 to 0.35 MPa (Low pressure type)
Working medium	Air	
Working temperature	5 to 60°C	

* 0.1 MPa or greater set pressure is required when used in the reverse flow.

ARM10F Series Front Handle Type Regulator



Relieving type Non-relieving type
 * A standard model is equipped with a backflow function. Main valve opens when the inlet pressure is released, and then the outlet pressure backflows into the inlet side.

Ordering Code ARM10F Series Front Handle Type Regulator

ARM10F 1 - 01 B - □ Z - N

Front handle type

IN/OUT port size
 01: G1/8 straight
 02: G1/4 straight

Symbol	None	0.35MPa setting*	Non-relieving	Oil-free*
Nil	●			
1		●		
2			●	
3				●
4		●	●	●
5		●		●
6			●	●
7		●	●	●

Semi-standard

Digital pressure switch output specifications
 Nil: None
 N: NPN open collector
 P: PNP open collector

* A pressure gauge with a full span of 0.4 MPa is attached.
 * The oil-free specification is grease-free in the fluid contact area.

Specifications

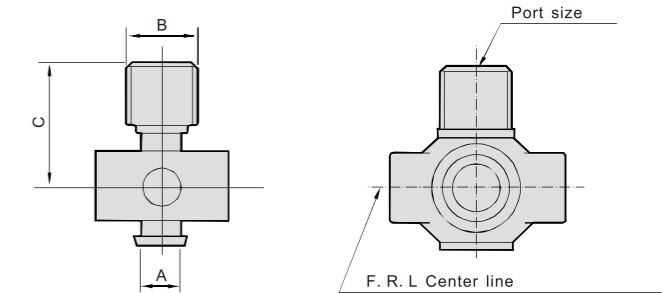
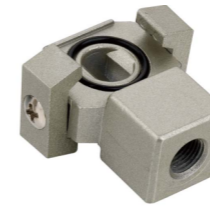
Model	ARM10	ARM10F
Regulator construction	Direct acting	
Working principal	Diaphragm regulator	
Relief mechanism	Standard	Relief type
	Semi-standard	Non-relieving type
Backflow function	Within(unbalanced type)	
IN side tubing O.D.	Φ4, Φ6	
OUT side tubing O.D.	Φ4, Φ6	
Proof pressure	1.5MPa	
Max. working pressure	1.0MPa	
Set pressure range	Standard	0.05 to 0.7MPa
	Semi-standard	0.05 to 0.35 MPa (Low pressure type)
Working medium	Air	
Working temperature	5 to 60°C	

* 0.1 MPa or greater set pressure is required when used in the reverse flow.

* 5 to 50°C when the digital pressure switch will be used.

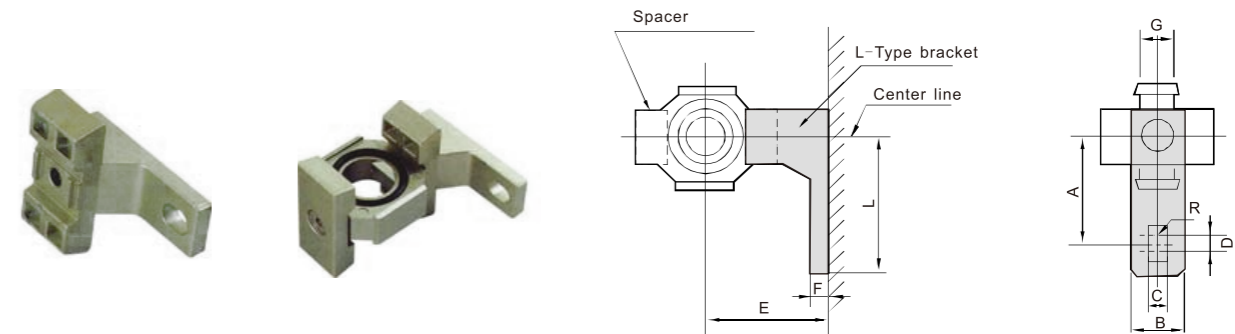
A Series F.R.L Accessories

T-Type Spacer



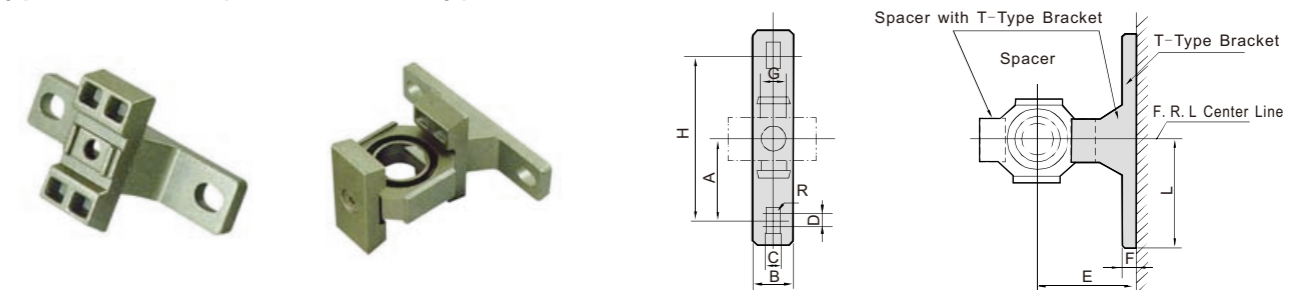
Model	Port Size	A	B	C	Applicable Model
Y21-01	1/8"	10	19	29	AC2000
Y21-02	1/4"				
Y31-01	1/8"	11	19	33	AC3000
Y31-02	1/4"				
Y41-02	1/4"	14	24	39	AC4000
Y41-03	3/8"				
Y61-03	3/8"	15	30	50.5	AC5000
Y61-04	1/2"				

L-Type Bracket/Spacer with L-Type Bracket



L-Type Bracket	Spacer with L-Type Bracket	A	B	C	D	E	F	G	R	L	Applicable Model
B110L	Y10L	20	12	4.5	3	25	5	8	2.25	27	AC1000
B210L	Y20L	24	15	5.5	3	30	5	10	2.75	33	AC2000
B310L	Y30L	35	16	7	4	41	7	11	3.5	45	AC2500-AC3000
B410L	Y40L	40	22	9	4	50	7	14	4.5	50	AC4000
B510L	Y50L	40	22	9	4	50	7	14	4.5	50	AC4000-06
B610L	Y60L	50	23	12	4	69.8	10.5	15	6	63	AC5000

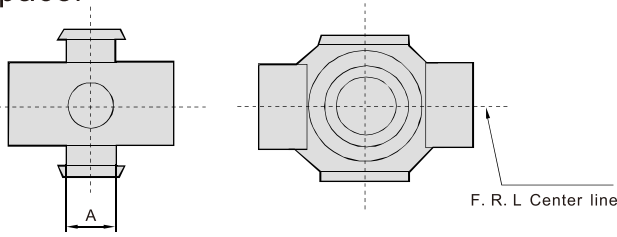
T-Type Bracket/Spacer with T-Type Bracket



T-Type Bracket	Spacer with T-Type Bracket	A	B	C	D	E	F	G	H	R	L	Applicable Model
B110T	Y10T	20	12	4.5	3	25	5	8	40	2.25	27	AC1010
B210T	Y20T	24	15	5.5	3	30	5	10	48	2.75	33	AC2010
B310T	Y30T	35	16	7	4	41	7	11	70	3.5	45	AC3010
B410T	Y40T	40	22	9	4	50	7	14	80	4.5	50	AC4010
B510T	Y50T	40	22	9	4	50	7	14	80	4.5	50	AC4010-06
B610T	Y60T	50	23	12	4	69.8	10.5	15	100	6	63	AC5010

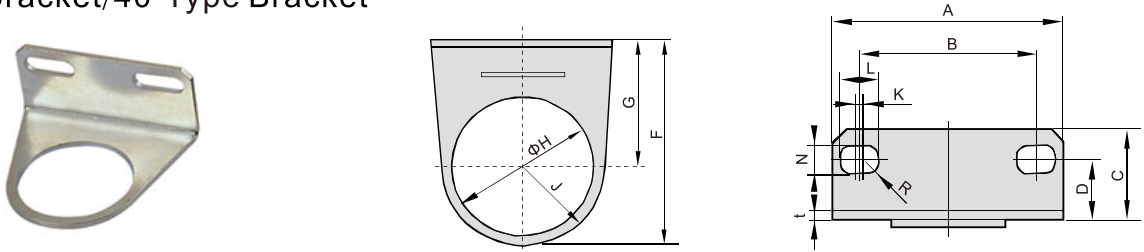
A Series F.R.L Brackets

Y-Type Spacer



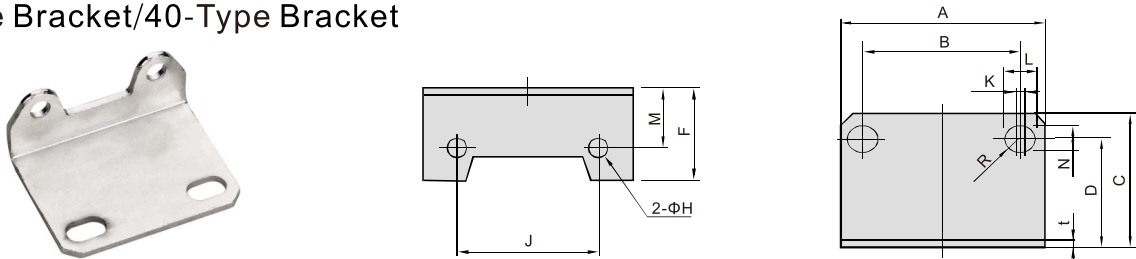
Y-Type Bracket	A	Applicable Model
Y10L	8	AC1000
Y20L	10	AC2000
Y30L	11	AC2500-AC3000
Y40L	14	AC4000
Y50L	14	AC4000-06
Y60L	15	AC5000

20-Type Bracket/40-Type Bracket



Model	A	B	C	D	F	G	ΦH	J	K	L	N	R	t	Applicable Model
B120	40	28	17	11	37.8	25	20.5	12.3	2	6.5	4.5	2.25	2	AR/AW1000
B220	55	34	25	19	50	30	33.5	20	10	15.4	5.4	2.7	2.3	AR/AW2000, AR2500
B320	53	40	21.5	14	64	39	42.5	25	1.5	8	6.5	3.25	2.3	AR/AW3000
B420	70	54	27	18	79.2	49.2	52.5	30	2	10.5	8.5	4.25	2.3	AR/AW4000~5000

20-Type Bracket/40-Type Bracket



Model	A	B	C	D	F	ΦH	J	K	L	M	N	R	t	Fixing screw	Applicable Model
B240	40	27	33	27	18	4.5	26	3	8.4	14	5.4	2.7	2.3	M4x8	AF/AL2000
B340	53	40	39	32	22.5	4.5	35	1.5	8	19	6.5	3.25	2.3	M4x8	AF/AL3000
B440	70	54	47	38	31.5	5.5	47	2	10.5	20	8.5	4.25	2.3	M5x10	AF/AL4000
B540	70	54	47	38	27.5	5.5	47	2	10.5	20	8.5	4.25	2.3	M5x10	AF/AL4000-06
B640	90	66	64	52	43	6.5	60	2	13	29	11	5.5	3.2	M6x10	AF/AL5000

HAD402 Auto Drain/ZDFS Auto Discharger



Model	HAD402-02	HAD402-03	HAD402-04
Guaranteed pressure resistance	1.5MPa		
Working pressure	0.15-1.0MPa		
Working temperature	5~60°C		
Port size	G1/4	G3/8	G1/2
Drain port size	G1/8		
Drain status	Normal Open		

